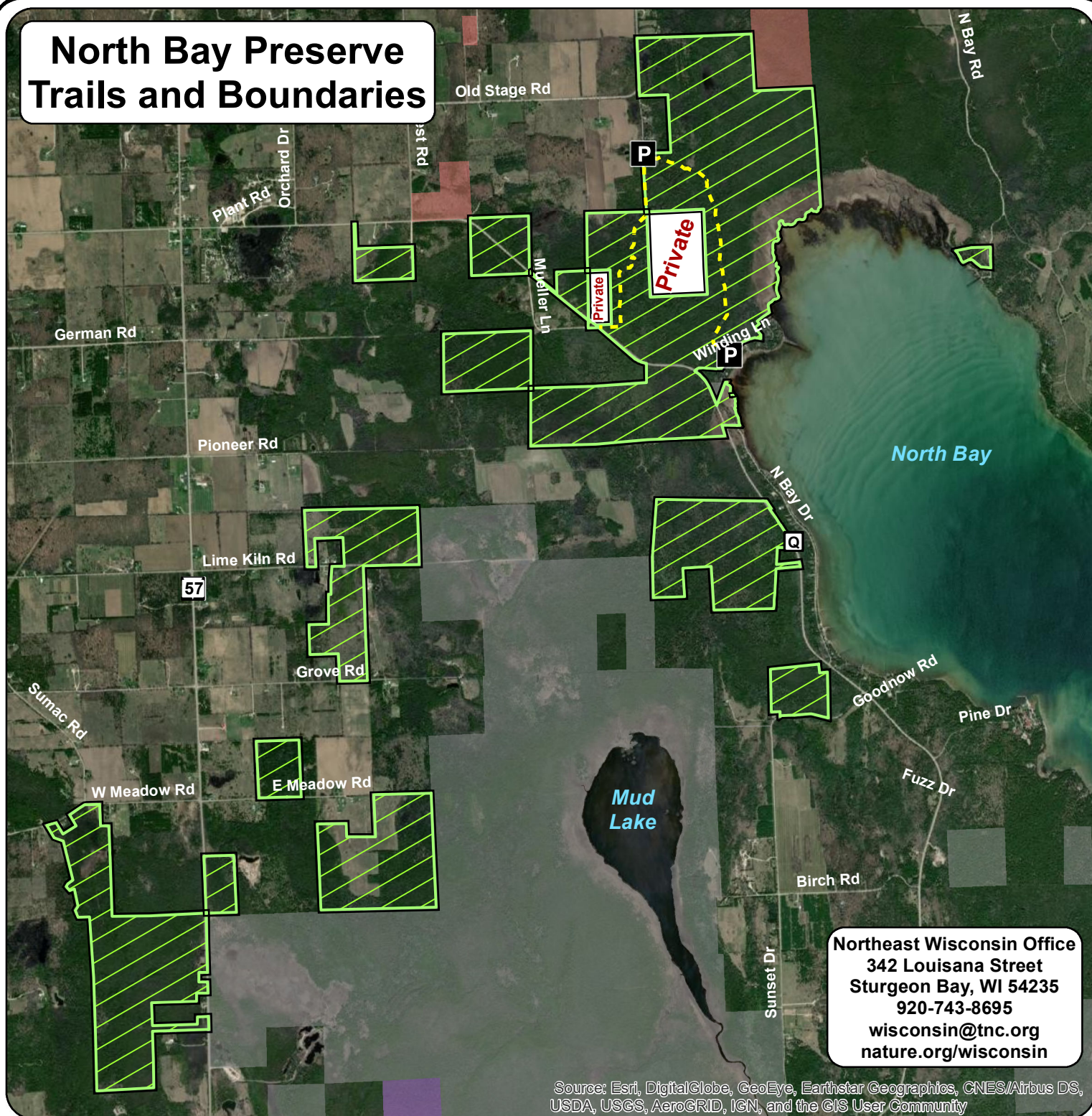


North Bay Preserve Trails and Boundaries



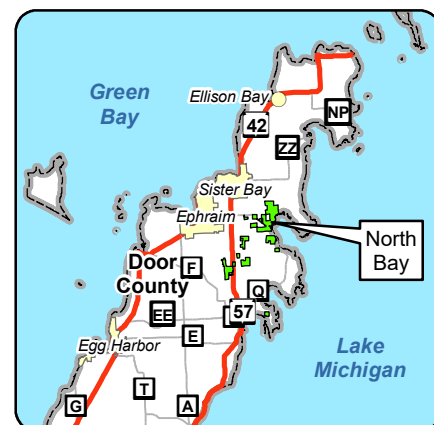
-  Nature Conservancy Preserve
-  Rustic Trail
-  Door County Land Trust
-  Wisconsin DNR
-  Ridges Sanctuary
-  Parking



The Nature Conservancy
Protecting nature. Preserving life.

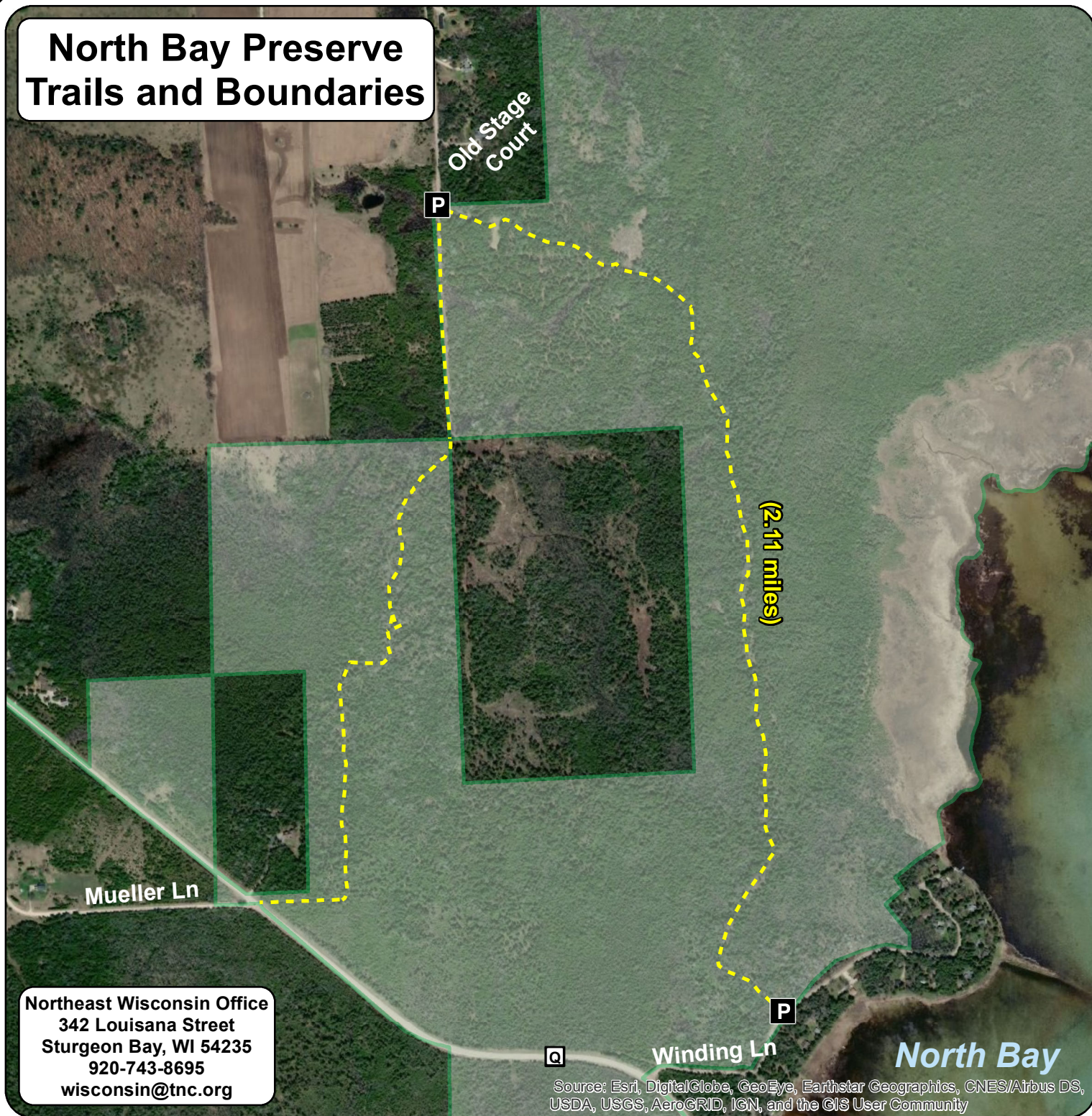
A horizontal scale bar with a black background and white markings. The markings are labeled 0, 0.25, 0.5, 0.75, and 1. The word "Miles" is written in white at the right end of the bar.

Directions: From Sister Bay, travel south on State Highway 57 about 1 mile to County Road Q. Travel east on County Q for about 2 miles. Take a left on Winding Lane and travel about 0.25 miles. A small parking area with a gate is on the left side of the road next to the trailhead.






1/8/2021
web map NorthBay.mxd

North Bay Preserve Trails and Boundaries



Northeast Wisconsin Office
342 Louisiana Street
Sturgeon Bay, WI 54235
920-743-8695
wisconsin@tnc.org

Source: Esri, DigitalGlobe, GeoEye, Earthstar Geographics, CNES/Airbus DS, USDA, USGS, AeroGRID, IGN, and the GIS User Community

-  Nature Conservancy Preserve
-  Rustic Trail
-  Parking

Directions: From Sister Bay, travel south on State Highway 57 about 1 mile to County Road Q. Travel east on County Q for about 2 miles. Take a left on Winding Lane and travel about 0.25 miles. A small parking area with a gate is on the left side of the road next to the trailhead.

The Nature Conservancy
Protecting nature. Preserving life.



0 0.1 0.2 0.3 0.4 Miles

