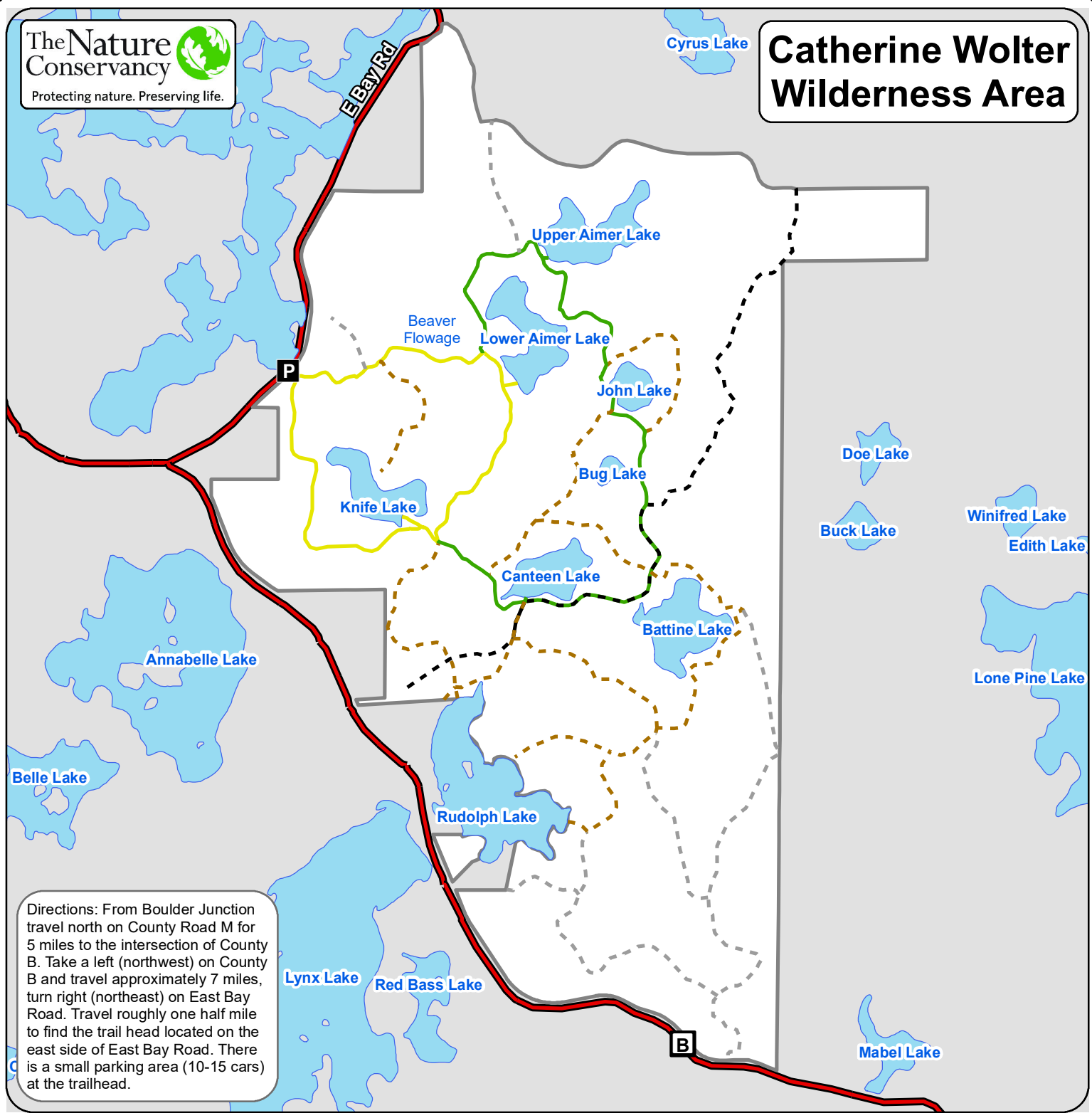








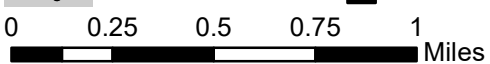


Catherine Wolter Wilderness Area



Directions: From Boulder Junction travel north on County Road M for 5 miles to the intersection of County B. Take a left (northwest) on County B and travel approximately 7 miles, turn right (northeast) on East Bay Road. Travel roughly one half mile to find the trail head located on the east side of East Bay Road. There is a small parking area (10-15 cars) at the trailhead.

-  Preserve boundary
-  Mark Musolf Family Trail - 2.8 miles, slightly hilly, easy walk
-  The ripples Trail - 3.1 miles, hilly, some wet areas (5 miles to/from parking area)
-  Shared access road
-  Secondary preserve trails
-  Unmaintained trails
-  Paved road
-  Parking area



Northwoods Office
8648 Highway 51 North, Unit 3
Minocqua, WI 54548
715-388-7171

