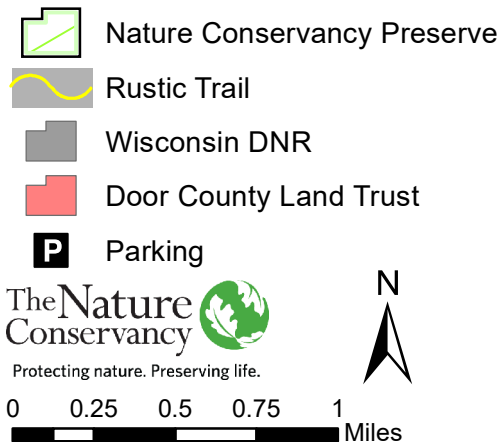


Mink River Preserve Trails and Boundaries

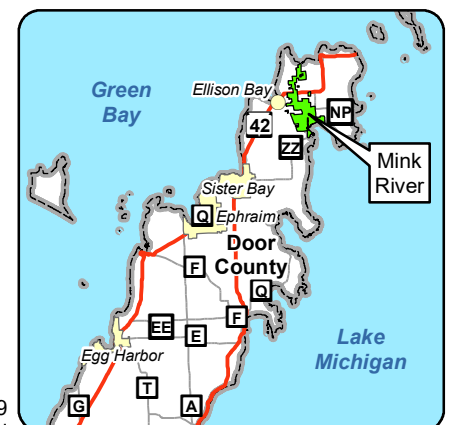


Northeast Wisconsin Office
342 Louisiana Street
Sturgeon Bay, WI 54235
920-743-8695
wisconsin@tnc.org

Source: Esri, DigitalGlobe, GeoEye, Earthstar Geographics, CNES/Airbus DS, USDA, USGS, AeroGRID, IGN, and the GIS User Community

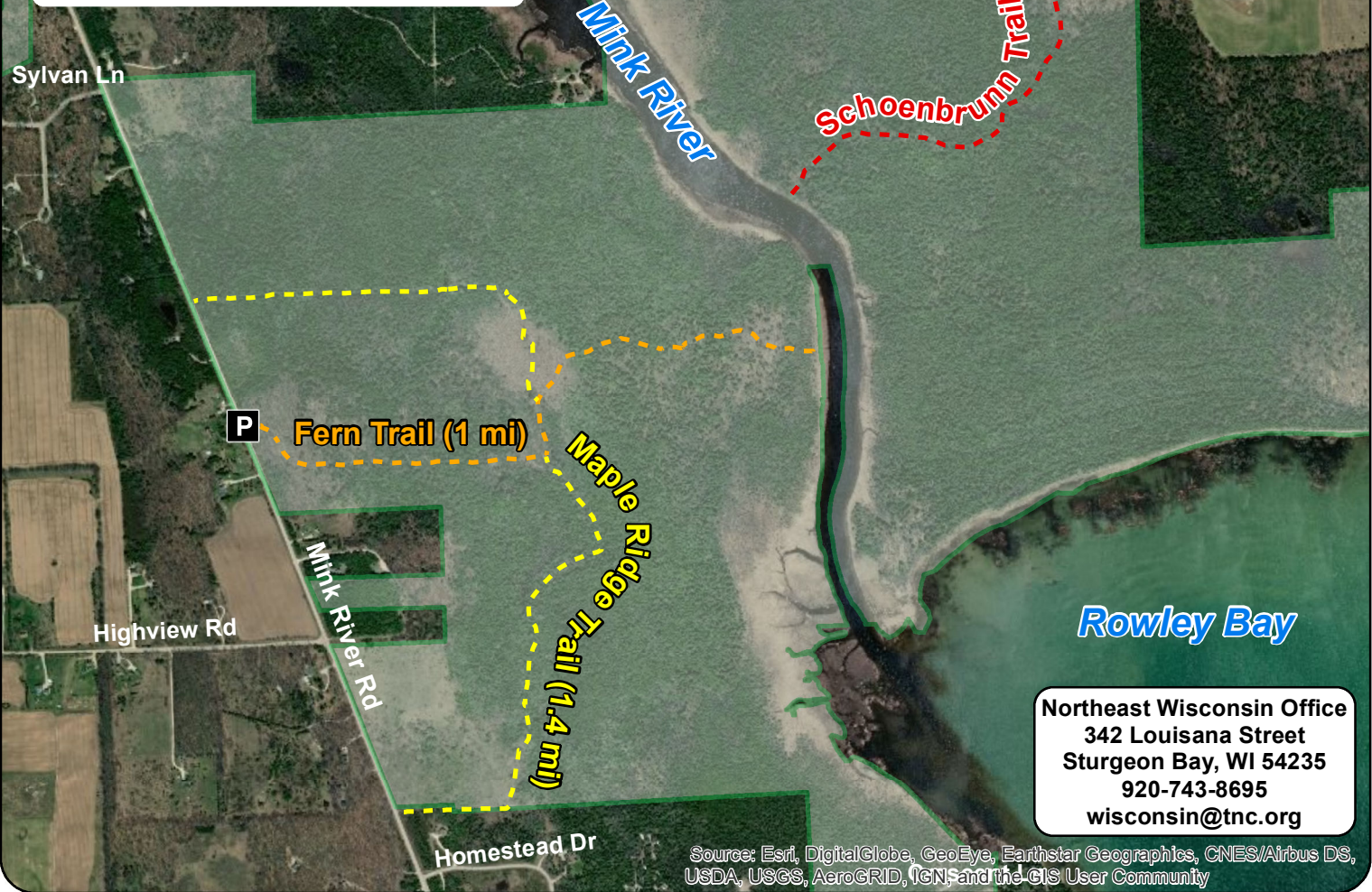
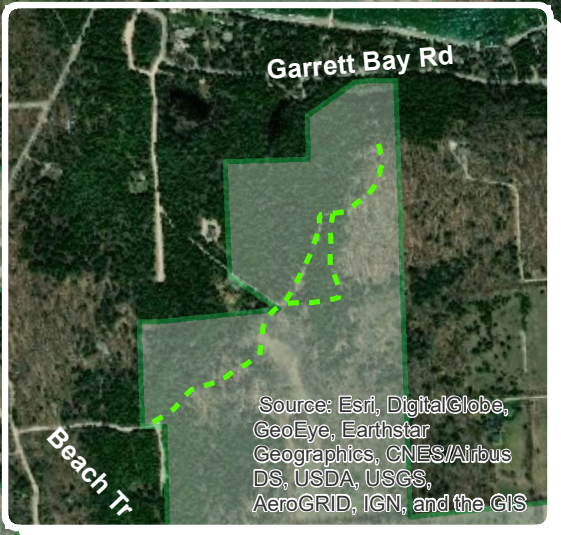


Directions: West trail: From Ellison Bay, travel southeast on Mink River Road for approximately 2 miles. A parking area is next to the trailhead on the east side of Mink River Road. Northeast trail: From Ellison Bay, travel east on State Highway 42 for 2 miles. Turn right on County Road NP and travel one mile south. The trailhead is on the west side of County NP where it makes a 90 degree turn east. Park in parking area adjacent to gated trailhead.








3/7/2019
web_map_MinkRiver.mxd

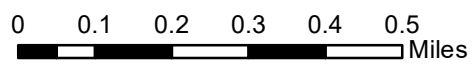
Mink River Preserve Trails and Boundaries



Northeast Wisconsin Office
 342 Louisiana Street
 Sturgeon Bay, WI 54235
 920-743-8695
wisconsin@tnc.org

Source: Esri, DigitalGlobe, GeoEye, Earthstar Geographics, CNES/Airbus DS, USDA, USGS, AeroGRID, IGN, and the GIS User Community

-  Nature Conservancy Preserve
-  Maple Ridge Trail
-  Fern Trail
-  Schoenbrunn Trail
-  Parking



Directions: West trail: From Ellison Bay, travel southeast on Mink River Road for approximately 2 miles. A parking area is next to the trailhead on the east side of Mink River Road. Northeast trail: From Ellison Bay, travel east on State Highway 42 for 2 miles. Turn right on County Road NP and travel one mile south. The trailhead is on the west side of County NP where it makes a 90 degree turn east. Park in parking area adjacent to gated trailhead.

