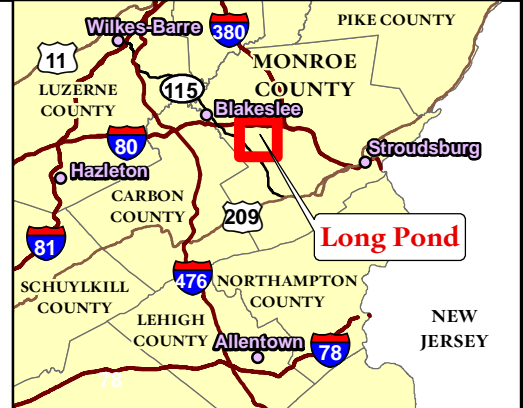
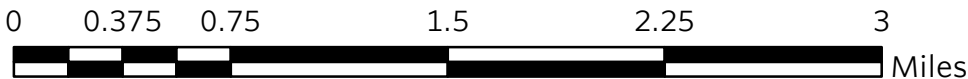


- The Nature Conservancy
- Bethlehem Authority
- PA State Forest
- PA State Game Lands
- Wetland
- Double Track Road



August 2015



The Nature Conservancy's Long Pond Preserve DMAP #1596 - WMU 3D - Monroe County, Pennsylvania

The Long Pond Preserve is comprised of several different properties within Tunkhannock Township including the Long Pond Barrens, Heimbach Tract, EHB 1, EHB 2, HEJ, and Bowers Gap. Many of these properties are accessed by parking on the road adjacent to the property. However, the HEJ and Bowers Gap Tracts must be accessed by parking on Hyspie Gap Rd and traversing the lands of Bethlehem Authority on foot. The DMAP #1596 coupon is valid ONLY for properties owned and managed by The Nature Conservancy in Long Pond depicted on the accompanying maps.

The Long Pond Nature Preserve contains a wide variety of wildlife habitats. Bogs, swamps, barrens, boreal forest, northern hardwood forest, and plantations make up the natural communities found in the vicinity.

TNC properties in Long Pond are enrolled in PGC's public access cooperator program and are subject to all State Gamelands rules and regulations.

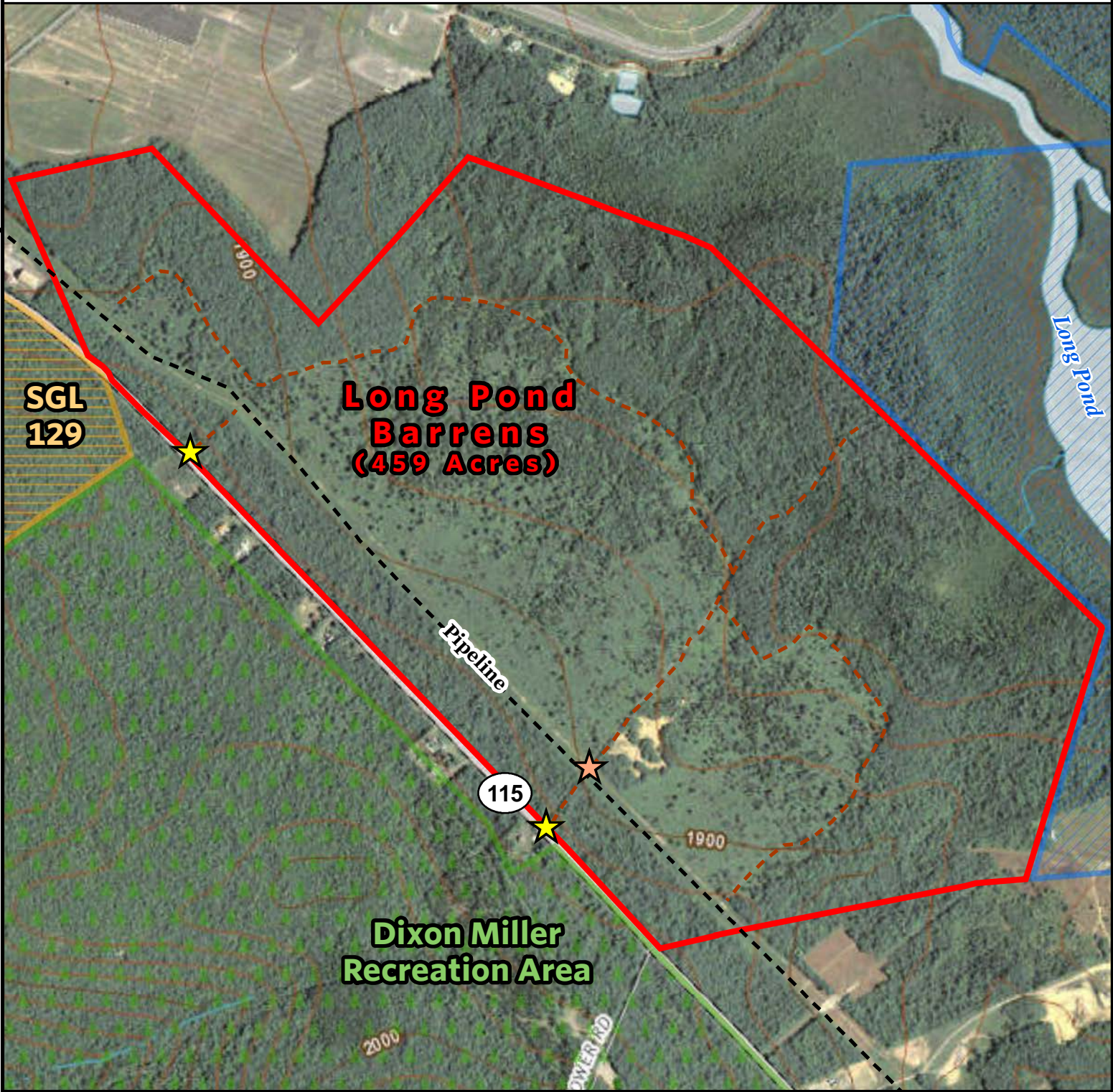
Important

- TNC properties are posted with white diamond-shaped markers
- Trapping is not permitted on any TNC property
- Motorized vehicles are not permitted on TNC property (except designated parking)
- Please observe all posted signage and respect the property of our neighbors

Directions to Hauser Nature Center

From I-80 take Exit 284 (Blakeslee). Turn onto PA 115 South. Continue for 3.1 miles. Turn left onto Long Pond Road at the Pocono Raceway sign. Continue for 2.7 miles. Just past Tunkhannock Township firehouse and the Long Pond post office the turn is on the left for The Nature Conservancy. A green and gold sign faces the road. GPS Coordinates: 41.061695, -75.485231

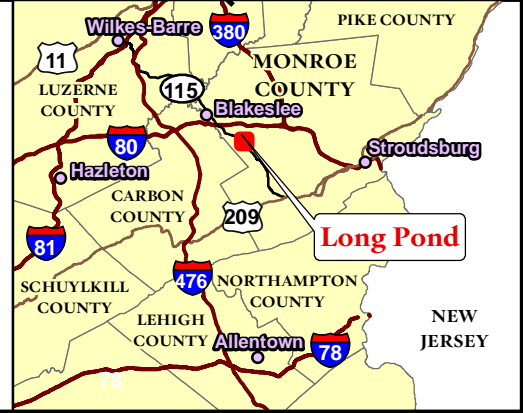
Please contact The Nature Conservancy at (570) 643-7922 with any questions.

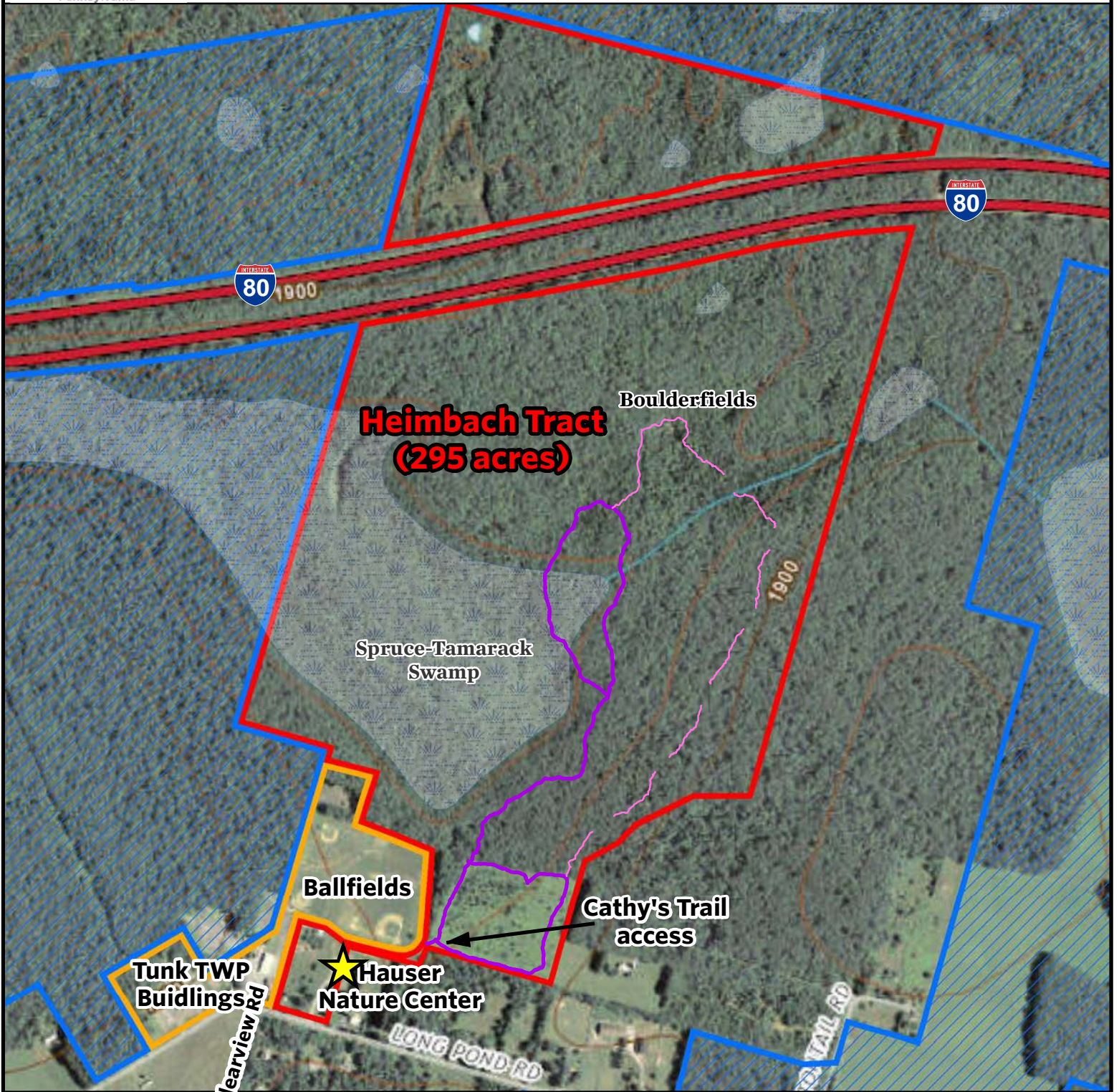


	The Nature Conservancy		Parking/Gate Location
	Bethlehem Authority		Parking when gate is open (Do not drive along pipeline corridor)
	PA State Forest		
	PA State Game Lands		
	Double Track Road		

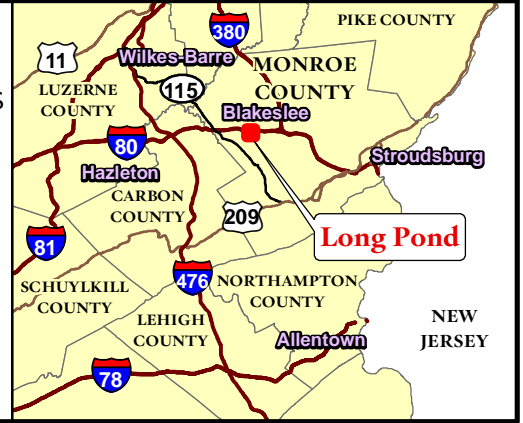
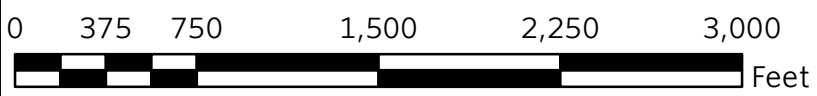
0 375 750 1,500 2,250 3,000 Feet

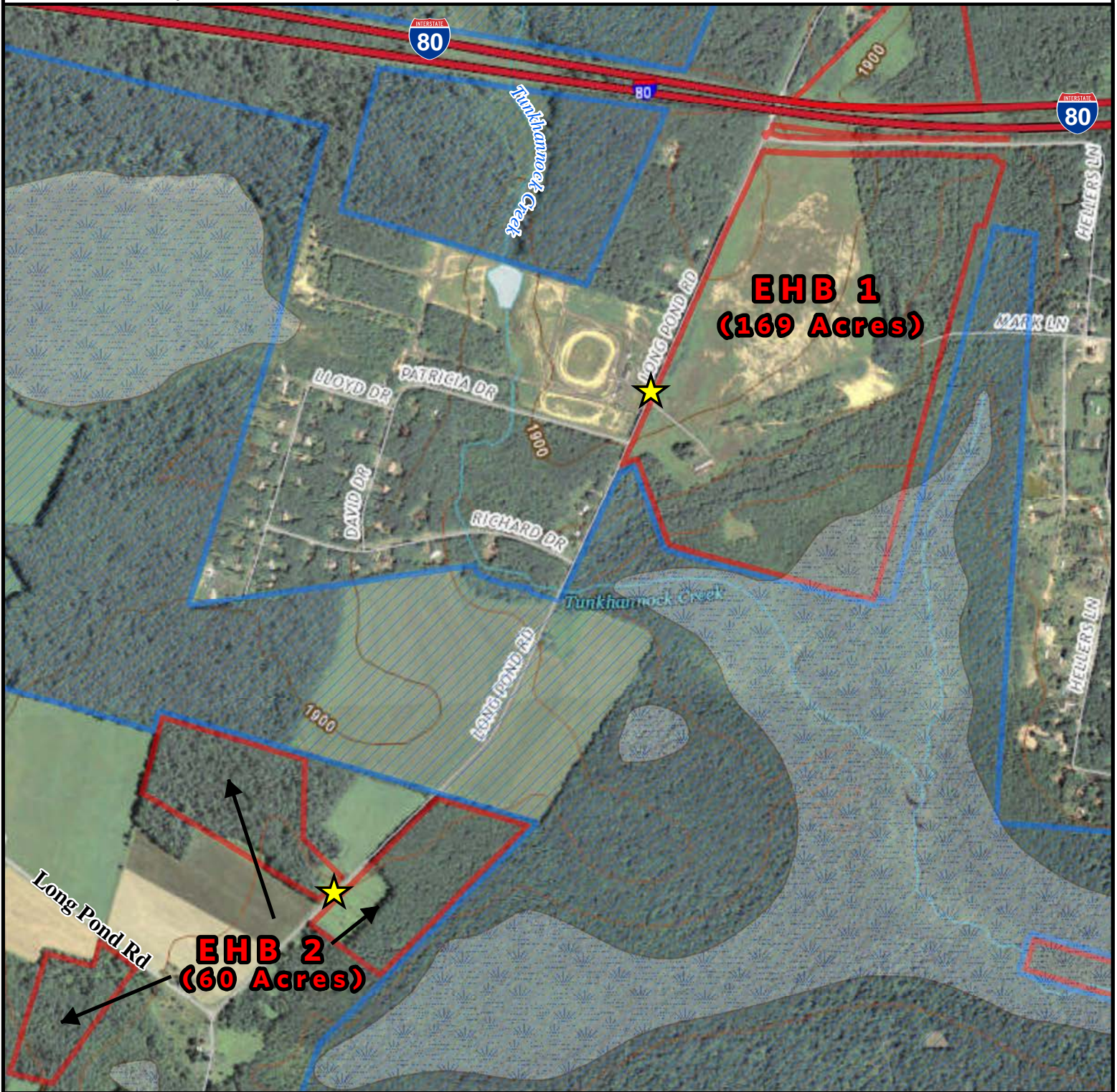
August 2015





- The Nature Conservancy
- Tunkhannock Township
- Bethlehem Authority
- Wetland
- Trails
- Trail construction in progress
- ★ Parking Lot

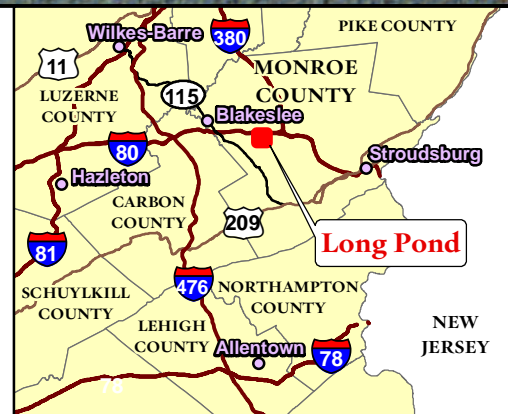
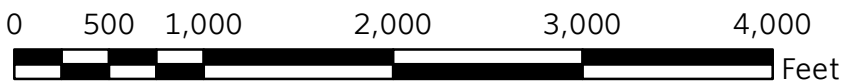


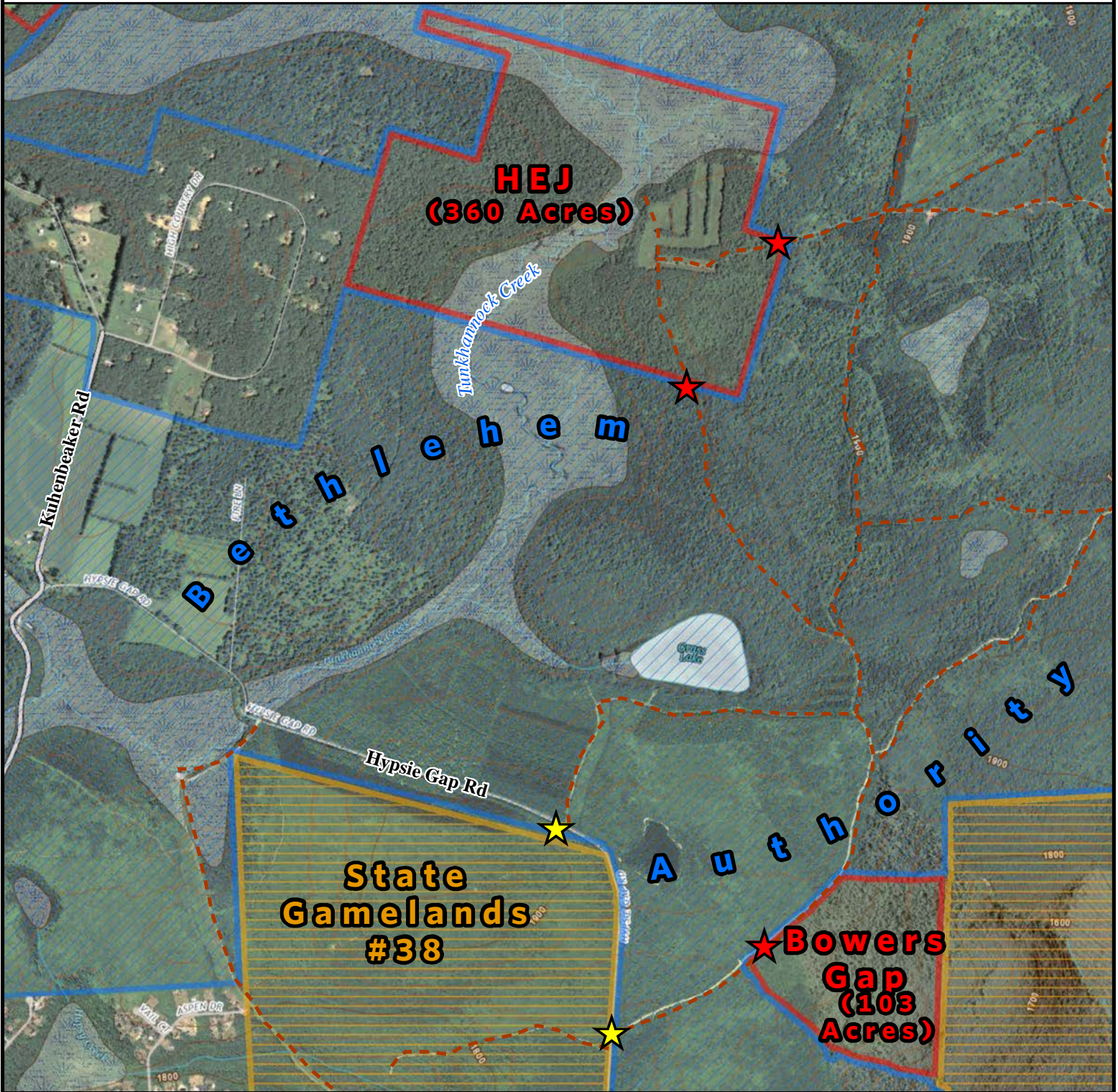









-  The Nature Conservancy
-  Bethlehem Authority
-  Wetland
-  Parking/Gate Location



August 2015





	The Nature Conservancy		Parking/Gate Location
	Bethlehem Authority		Foot access to TNC property
	PA State Game Lands		
	Wetland		
	Double Track Road		

0 750 1,500 3,000 4,500 6,000 Feet

August 2015

