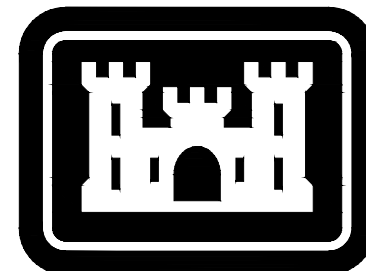
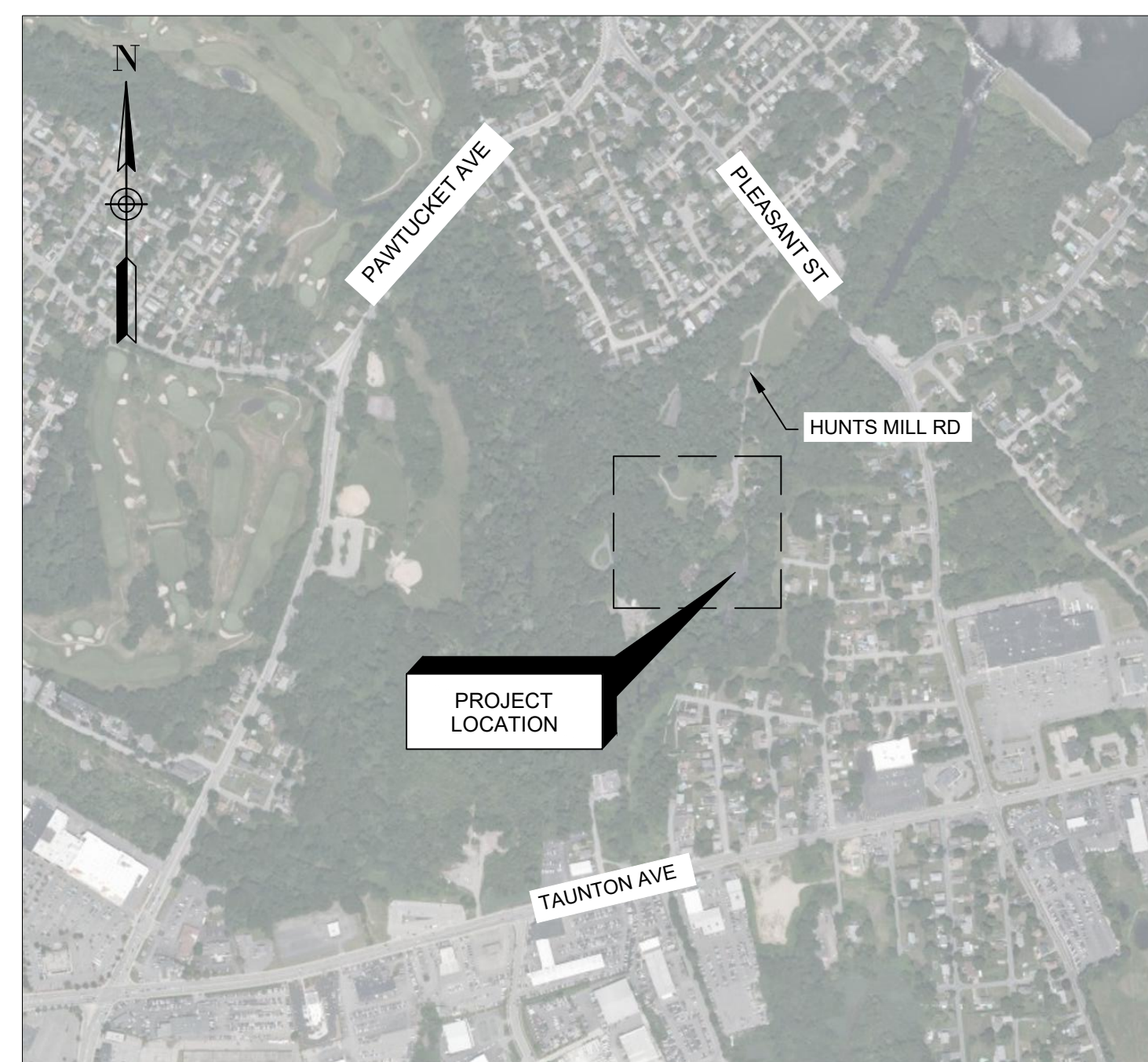
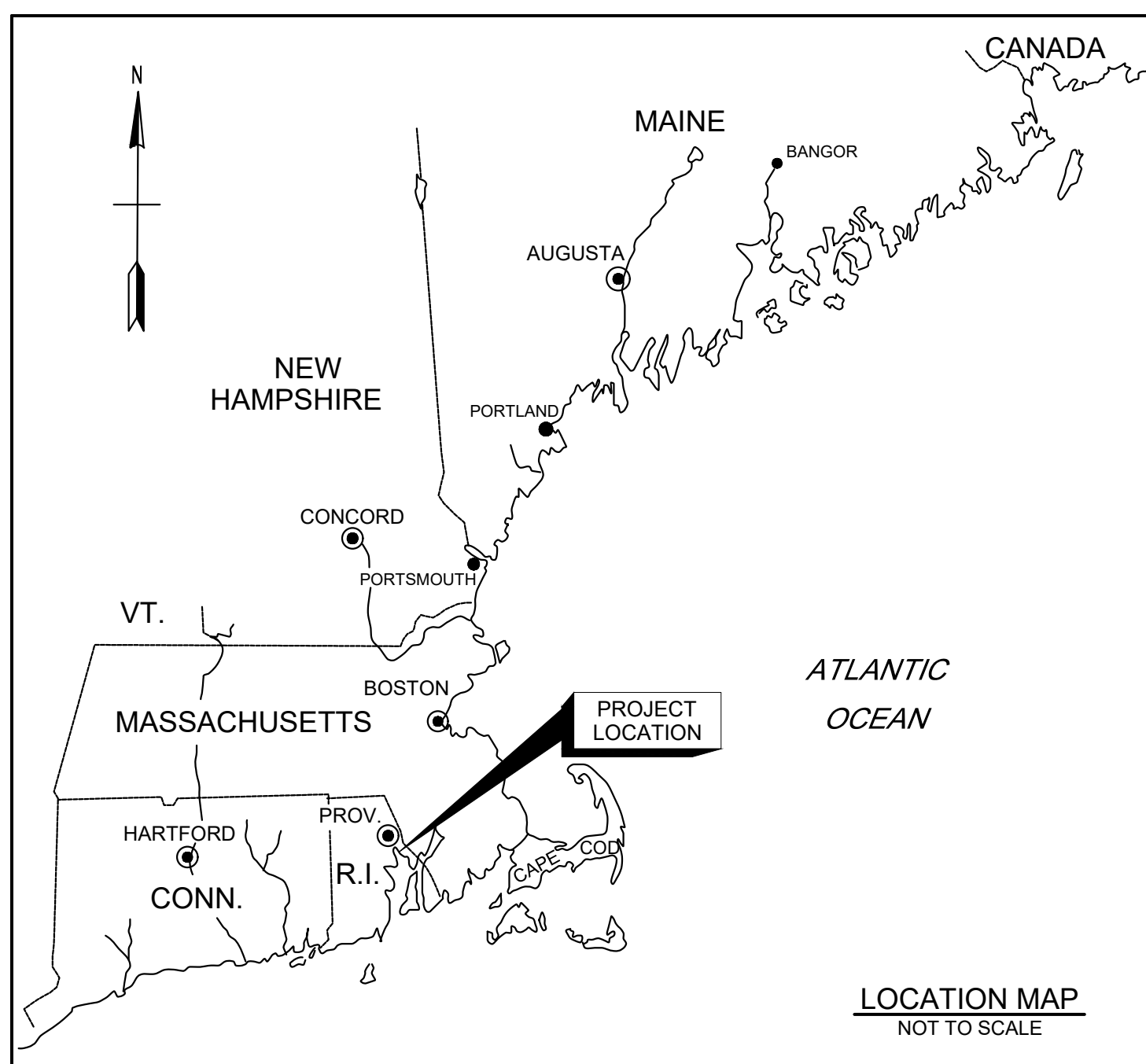


APPENDIX I



**US Army Corps
of Engineers®**
New England District

FISH ACCESS TO THE FISH PASSAGE FACILITY HUNTS MILL DAM, TEN MILE RIVER EAST PROVIDENCE, RHODE ISLAND



INDEX TO DRAWINGS			
SHEET NO.		DESIGN FILE	SHEET TITLE
1	G-001	TMR-4_G-001.DWG	COVER SHEET AND INDEX
2	G-101	TMR-4_G-101.DWG	GENERAL PLAN
3	C-101	TMR-4_C-101.DWG	SITE PLAN AND PROFILE
4	C-102	TMR-4_C-101.DWG	SITE PLAN AND LEDGE SPINE PROFILE
5	C-301	TMR-4_C-301.DWG	WEIR SECTIONS
6	C-501	TMR-4_C-501.DWG	CONSTRUCTION DETAILS



**US Army Corps
of Engineers®**

MARK	DESCRIPTION	DATE

DESIGNED BY: K. WUELLER	ISSUE DATE:
CHECKED BY: K. WUELLER	SOLICITATION NO.:
SUBMITTED BY: S. BUCKE	CONTRACT NO.:
SCALE: ANSI	DRAWING CODE: TMR-4
N.T.S.	SHEET 1 OF 6

FISH ACCESS TO THE
FISH PASSAGE FACILITY
HUNTS MILL DAM, TEN MILE RIVER
EAST PROVIDENCE, RHODE ISLAND

COVER SHEET AND INDEX

SHEET ID
G-001

SOLICITATION NO.:
CONTRACT NO.:
ISSUE DATE:

SIGNATURES AFFIXED BELOW INDICATE OFFICIAL RECOMMENDATION AND APPROVAL OF ALL DRAWINGS IN THIS SET AS INDEXED ON THIS SHEET

APPROVED FOR TECHNICAL ADEQUACY BY:	
TECHNICAL LEAD ENGINEER _____	DATE _____
REVIEWED BY:	
CHIEF, GEO-ENV/WATER RESOURCES BRANCH _____	DATE _____
REVIEWED BY:	
CHIEF, GEO-ENV BR/DEPUTY CHIEF, ENGINEERING/PLANNING DIV _____	DATE _____
APPROVAL RECOMMENDED BY:	
CHIEF, DESIGN BRANCH (ACTING) _____	DATE _____
APPROVED BY:	
CHIEF, ENGINEERING / PLANNING DIVISION _____	DATE _____

This project was designed by the U.S. Army Corps of Engineers. The initials or signatures and registration designations of individuals appear on these project documents, within the scope of their employment as required by ER 1110-1-8152.



TRACT NO.	OWNERSHIP	ACREAGE	REMARKS
505-1-1	CITY OF EAST PROVIDENCE	0.58 AC	TEMP. CONSTRUCTION EASEMENT 2019-2024

NEW TEMPORARY EASEMENT 2019-2024		
LOCATION	NORTHING	EASTING
A	271254.37	370171.26
B	271218.08	370138.88
C	271038.50	370158.41
D	271023.96	370149.26
E	271083.22	370078.17
F	271136.01	370031.32
G	271170.42	370070.09
H	271260.99	370070.09
I	271265.96	370046.73
J	271306.10	370009.37
K	271354.53	370061.41

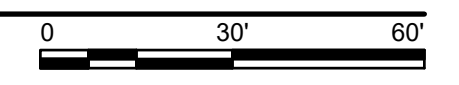
NEW PERMANENT EASEMENT		
LOCATION	NORTHING	EASTING
1	271238.32	370120.98
2	271234.36	370083.79
3	271089.52	370099.22
4	271093.48	370136.41

GENERAL NOTES

1. ALL WORK AND MATERIALS SHALL BE IN ACCORDANCE WITH THE CONTRACT DOCUMENTS AND, WHERE NOTED, THE RHODE ISLAND DEPARTMENT OF TRANSPORTATION'S (RIDOT) "STANDARD SPECIFICATIONS FOR ROAD AND BRIDGE CONSTRUCTION".
2. ALL WORK AND MATERIALS PROVIDED SHALL CONFORM WITH THE LINES, GRADES, ELEVATIONS, DIMENSIONS, MATERIAL REQUIREMENTS, AND TESTING REQUIREMENTS THAT ARE SPECIFIED IN THE CONTRACT DRAWINGS AND SPECIFICATIONS.
3. THE GOVERNMENT WILL NOT BE RESPONSIBLE FOR MEANS, METHODS, PROCEDURES, TECHNIQUES, OR SEQUENCES OF CONSTRUCTION THAT ARE NOT SPECIFIED IN THE CONTRACT DOCUMENTS. THE GOVERNMENT WILL NOT BE RESPONSIBLE FOR FAILURE BY THE CONTRACTOR TO PERFORM WORK ACCORDING TO THE CONTRACT DOCUMENTS.
4. THE EXISTING CONDITIONS SHOWN ARE FROM A U.S. ARMY CORPS OF ENGINEERS TOPOGRAPHIC FIELD SURVEY CONDUCTED DURING SUMMER 2017.
5. COORDINATES SHOWN ARE IN U.S. FEET AND REFERENCE THE STATE PLANE COORDINATE SYSTEM FOR RHODE ISLAND AND THE NORTH AMERICAN DATUM OF 1983 (NAD 1983).
6. ELEVATIONS SHOWN ARE IN U.S. FEET AND REFERENCE THE NORTH AMERICAN VERTICAL DATUM OF 1988 (NAVD 88). REFER TO A1, THIS SHEET, FOR BENCHMARK DESCRIPTION AND CONTROL POINTS COORDINATE LOCATION AND ELEVATION.
7. THE CONTRACTOR IS RESPONSIBLE FOR ALL LAYOUT AND FIELD ENGINEERING REQUIRED FOR COMPLETION OF THIS PROJECT. THE GOVERNMENT WILL NOT PROVIDE SURVEY SERVICES. SEE SECTION 01050 FIELD ENGINEERING.
8. THE CONTRACTOR SHALL VERIFY THAT ACTUAL SITE CONDITIONS ARE CONSISTENT WITH THE EXISTING CONDITIONS DEPICTED ON THE CONTRACT DRAWINGS. DISCREPANCIES, OMISSIONS, AND ERRORS SHALL BE REPORTED TO THE CONTRACTING OFFICER'S REPRESENTATIVE (COR) PRIOR TO THE START OF CONSTRUCTION.
9. ALL TREES AND OTHER VEGETATION WITHIN THE CONSTRUCTION AREA NOT SPECIFICALLY DESIGNATED FOR REMOVAL SHALL BE PRESERVED AND PROTECTED, WHETHER SHOWN OR NOT SHOWN ON THE CONTRACT DRAWINGS. THE CONTRACTOR SHALL ALSO MINIMIZE DISTURBANCE TO LIMIT REMOVAL OF TREES AND OTHER VEGETATION. TREES TO BE PRESERVED SHALL BE PROTECTED WITH HIGH VISIBILITY FENCING PLACED A MINIMUM 15 FEET FROM THE TREE TRUNK. TREES 6-INCHES OR GREATER AT DBH (DIAMETER BREAST HEIGHT) SHALL BE PROTECTED WITH FENCING PLACED AT THE CRITICAL ROOT ZONE OR 15 FEET, WHICHEVER IS GREATER.
10. IT IS THE CONTRACTOR'S RESPONSIBILITY TO PROVIDE AND MAINTAIN EROSION PREVENTION AND SEDIMENTATION CONTROL MEASURES AS FIELD CONDITIONS REQUIRE AND AS IN THE SPECIFICATIONS.
11. ALL ROCK FILL REQUIRED UNDER THIS CONTRACT SHALL BE OBTAINED AND FURNISHED BY THE CONTRACTOR.
12. THE CONTRACTOR IS RESPONSIBLE FOR OBTAINING ADDITIONAL BENCHMARK INFORMATION IF NEEDED AND FOR LOCATING AND PROTECTING ALL EXISTING BENCHMARKS THAT ARE INTENDED TO REMAIN IN PLACE FOR THE DURATION OF CONSTRUCTION. AT THE CONTRACTOR'S EXPENSE, ALL ADDED OR RELOCATED BENCHMARKS SHALL BE RELOCATED BY A PROFESSIONAL LAND SURVEYOR (PLS) LICENSED IN THE STATE OF RHODE ISLAND. ALL FIELD NOTES SHALL BE PROVIDED TO THE COR PRIOR TO THE SETTING OF WORK FROM A NEW OR RELOCATED BENCHMARK.
13. THE CONTRACTOR SHALL PROVIDE PROTECTION TO SURROUNDING PAVEMENT, VEGETATION, STRUCTURES, AND UTILITIES THAT ARE IN THE WORK AREA AND ARE TO REMAIN IN PLACE. CONTRACTOR CAUSED DAMAGES SHALL BE REPAIRED AND RESTORED TO ORIGINAL CONDITIONS OR BETTER AT THE CONTRACTOR'S EXPENSE. DAMAGES TO EXISTING ASPHALT AND CONCRETE SHALL INCLUDE, BUT ARE NOT LIMITED TO, CHIPPING, CRACKING, INDENTATIONS, AND SCUFFING.
14. ALL SURFACES DISTURBED BY THE CONTRACTOR WHICH ARE OUTSIDE THE CONSTRUCTION LIMITS OF WORK OR SCOPE OF WORK, OR ARE SURFACES DISTURBED WITHOUT PRIOR AUTHORIZATION BY THE COR, SHALL BE RESTORED AT THE CONTRACTOR'S EXPENSE TO ORIGINAL CONDITIONS OR BETTER.
15. DISPOSAL OF ALL DEMOLISHED MATERIALS INCLUDING EXISTING MISCELLANEOUS CONSTRUCTION DEBRIS AND FILL IS THE RESPONSIBILITY OF THE CONTRACTOR AND MUST BE DISPOSED OF OFFSITE IN ACCORDANCE WITH ALL FEDERAL, STATE, AND LOCAL MUNICIPAL REQUIREMENTS AT NO ADDITIONAL COST TO THE GOVERNMENT.

LEGEND	
SYMBOL	DESCRIPTION
	EASEMENT BOUNDARIES
	SURVEY CONTROL POINT
	CHAIN LINK FENCE
	GABION WEIR
	CAPSTONE SLAB
	LEVELING FILL
	WATER SURFACE ELEVATION
	WATER

BENCHMARK TABLE				
NAME	NORTHING	EASTING	ELEV.	DESCRIPTION
TIM	271337.71	369809.20	33.53	BOUND SET IN GRASS WITH ALUMINUM DISK STAMPED TIM 2017 WEST OF HISTORICAL SOCIETY BUILDING
BMTL	271438.01	370029.44	37.80	BENCH SPIKE IN U. POLE WITH LIGHT NEXT TO FLAGPOLE NORTH OF HISTORICAL SOCIETY BUILDING
DAM	271349.90	370148.25	36.78	DH SET IN CHISEL SQUARE TOP OF DAM AT FISH LADDER



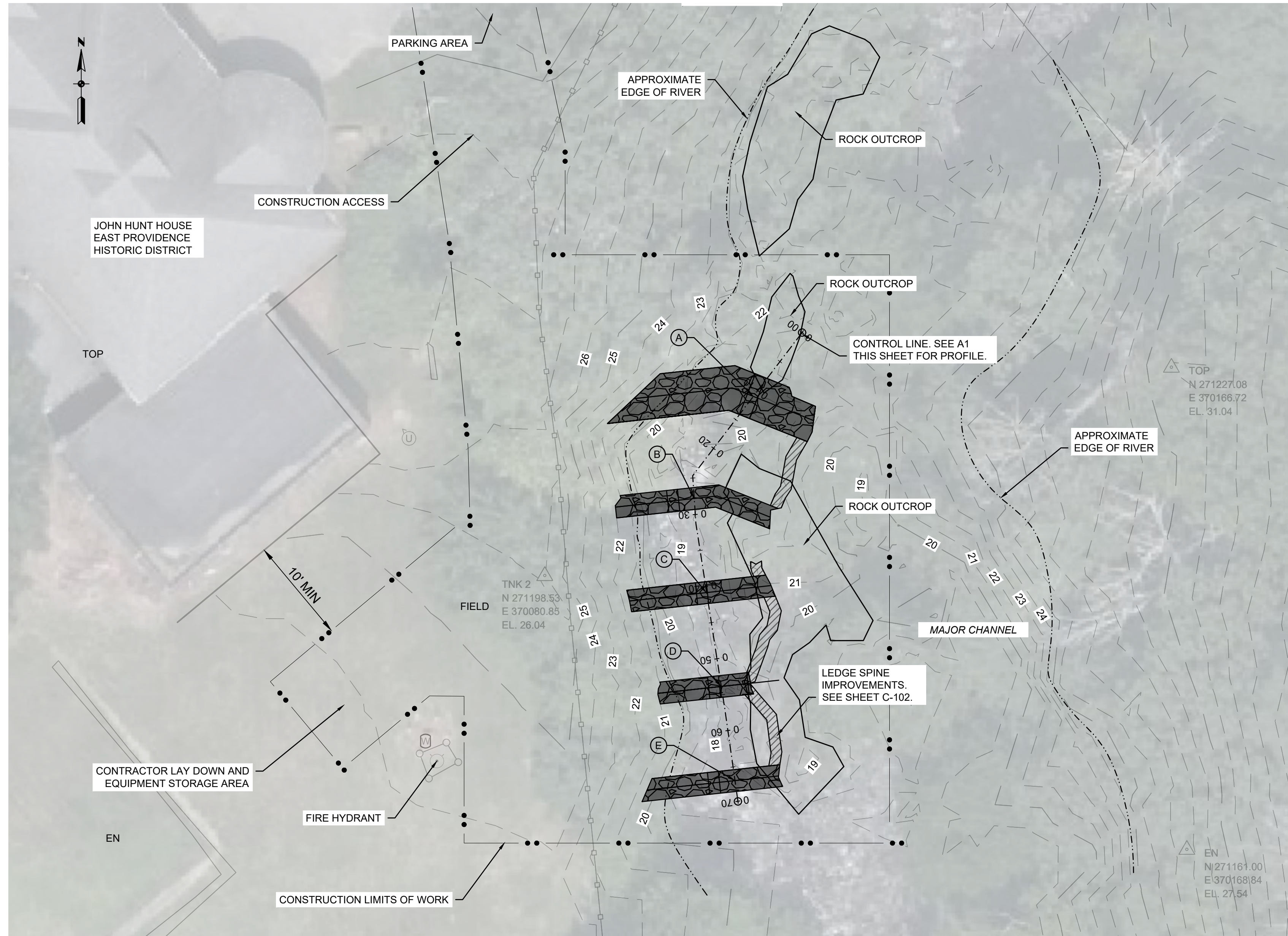
MARK	DESCRIPTION	DATE

DESIGNED BY: K. MUELLER	ISSUE DATE:
CHECKED BY: K. MUELLER	SOLICITATION NO.:
SUBMITTED BY: L. THIBODEAU LPT	CONTRACT NO.:
SCALE: 1"=30'	DRAWING CODE: TMR-4
	SHEET 2 OF 6

U.S. ARMY CORPS OF ENGINEERS
NEW ENGLAND DISTRICT
686 VIRGINIA ROAD
CONCORD, MA 01742-2751

FISH ACCESS TO THE
FISH PASSAGE FACILITY
HUNTS MILL DAM, TEN MILE RIVER

GENERAL PLAN



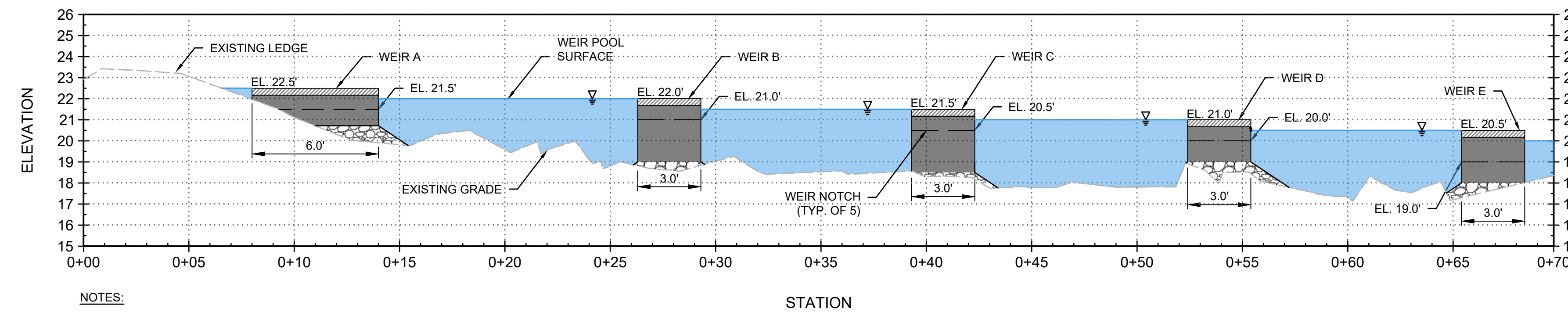
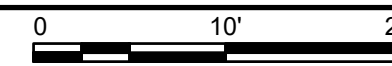
CONTROL LINE			
STATION	NORTHING	EASTING	DESCRIPTION
0+00.0	271,231.82	370,116.11	POINT OF BEGINNING (POB)
0+24.7	271,212.20	370,101.12	POINT OF INTERSECTION (PI)
0+31.3	271,205.66	370,101.56	POINT OF INTERSECTION (PI)
0+57.2	271,180.03	370,105.55	POINT OF INTERSECTION (PI)
0+69.8	271,167.57	370,107.32	POINT OF ENDING (POE)

SURVEY DATA			
NAME	NORTHING	EASTING	ELEV.
EN	271,161.00	370,168.84	27.54
TOP	271,227.08	370,166.72	31.04
TNK2	271,198.53	370,080.85	26.04

WEIR COORDINATES - WEIR ALIGNMENT

IDENTIFIER	STATION	NORTHING	EASTING
A	00+11.0	271,223.08	370,109.44
B	00+27.8	271,209.09	370,101.34
C	00+40.8	271,196.20	370,103.04
D	00+53.9	271,183.33	370,105.04
E	00+66.9	271,170.43	370,106.92

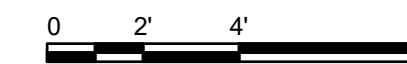
E1 SITE PLAN
SCALE: 1" = 10'



NOTES:

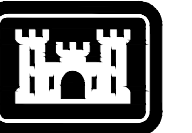
- REFER TO SHEET C-301 FOR TYPICAL WEIR SECTIONS

A1 PROFILE
SCALE: 1" = 4'



CONSTRUCTION NOTES

- CONSTRUCTED WEIR FOOTPRINT MAY VARY FROM DESIGN BASED ON ON-SITE CONDITIONS WHERE SLIGHT ADJUSTMENTS TO LOCATION MAY BETTER FIT TO EXISTING ROCK AND COMPLEX TERRAIN.
- PLACEMENT OF LEVELING FILL SHALL BE PERFORMED IN THE DRY. REFER TO SPECIFICATION SECTION 02 40 00 "CONTROL OF WATER" FOR DETAILS AND REQUIREMENTS.
- CONSTRUCTED WEIR HEIGHT MAY HAVE A TOLERANCE OF +/- 2 IN., GIVEN THAT THE ABOVE CRITERIA ARE MET.
- SEE SPECIFICATION SECTION 35 31 19 FOR CAPSTONE ROCK SLAB REQUIREMENTS.



US Army Corps of Engineers®

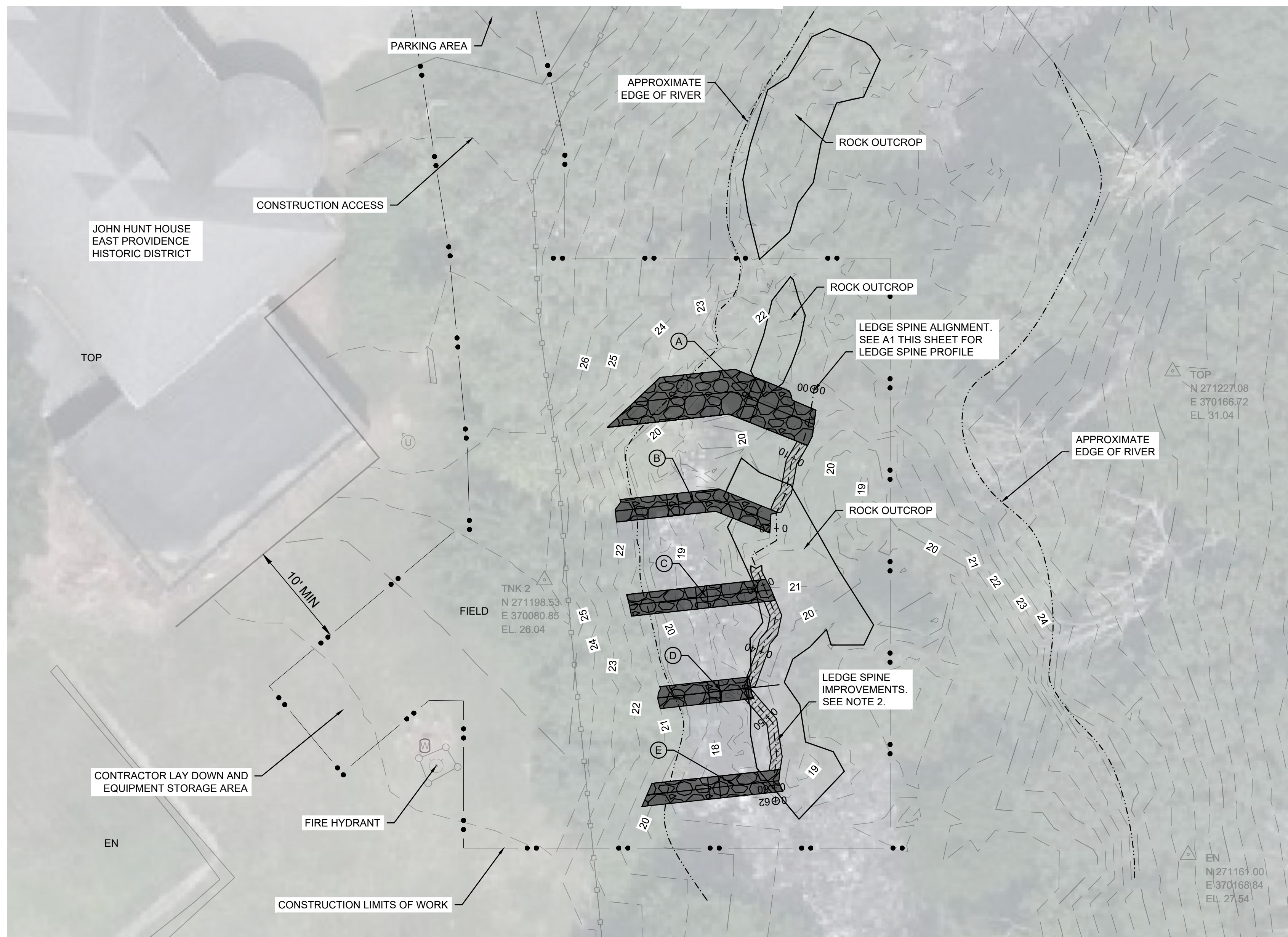
DATE	MARK	DESCRIPTION

DESIGNED BY: K. MUELLER	ISSUE DATE:
CHECKED BY: K. MUELLER	SOLICITATION NO.:
SUBMITTED BY: L. THIBODEAU LPT	CONTRACT NO.:
SCALE: N.T.S.	DRAWING CODE: TMR-4
	SHEET 3 OF 6

FISH ACCESS TO THE FISH PASSAGE FACILITY HUNTS MILL DAM, TEN MILE RIVER

SITE PLAN AND PROFILE

SHEET ID
C-101



LEDGE SPINE ALIGNMENT

STATION	NORTHING	EASTING	DESCRIPTION
0+00.0	271,224.57	370,117.72	POINT OF BEGINNING (POB)
0+04.7	271,219.92	370,116.99	POINT OF INTERSECTION (PI)
0+07.5	271,217.29	370,116.19	POINT OF INTERSECTION (PI)
0+10.6	271,214.60	370,114.62	POINT OF INTERSECTION (PI)
0+14.7	271,210.50	370,113.88	POINT OF INTERSECTION (PI)
0+17.9	271,207.65	370,112.53	POINT OF INTERSECTION (PI)
0+21.6	271,203.91	370,112.59	POINT OF INTERSECTION (PI)
0+25.7	271,201.83	370,109.12	POINT OF INTERSECTION (PI)
0+30.6	271,197.26	370,111.01	POINT OF INTERSECTION (PI)
0+34.6	271,193.63	370,112.49	POINT OF INTERSECTION (PI)
0+36.9	271,191.34	370,112.02	POINT OF INTERSECTION (PI)
0+38.5	271,190.05	370,110.97	POINT OF INTERSECTION (PI)
0+45.2	271,183.74	370,108.83	POINT OF INTERSECTION (PI)
0+47.6	271,181.57	370,109.80	POINT OF INTERSECTION (PI)
0+51.0	271,178.97	370,112.07	POINT OF INTERSECTION (PI)
0+55.6	271,174.45	370,112.61	POINT OF INTERSECTION (PI)
0+58.9	271,171.16	370,112.17	POINT OF INTERSECTION (PI)
0+61.8	271,168.30	370,112.47	POINT OF ENDING (POE)

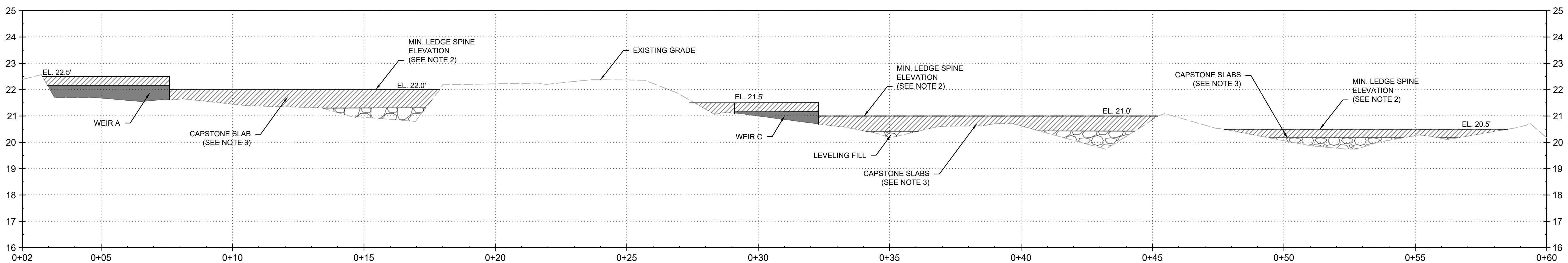
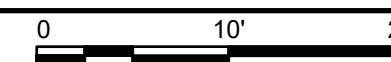
WEIR COORDINATES - LEDGE SPINE ALIGNMENT

IDENTIFIER	STATION	NORTHING	EASTING
A	00+04.6	271,220.05	370,117.02
B	00+19.2	271,206.17	370,112.84
C	00+30.7	271,197.08	370,111.04
D	00+44.9	271,184.09	370,112.14
E	00+58.3	271,170.98	370,111.92

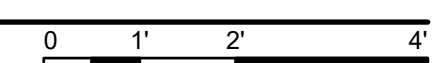
CONSTRUCTION NOTES

- LEDGE SPINE FOOTPRINT MAY VARY FROM DESIGN BASED ON ON-SITE CONDITIONS WHERE SLIGHT ADJUSTMENTS TO LOCATION MAY BETTER FIT TO EXISTING ROCK AND COMPLEX TERRAIN.
- MINIMUM ELEVATION OF TOP OF LEDGE SPINE MUST MATCH ELEVATION OF THE TOP OF WEIR DIRECTLY DOWNSTREAM.
- SEE SPECIFICATION SECTION 35 31 19 FOR CAPSTONE REQUIREMENTS.
- PLACEMENT OF LEVELING FILL SHALL BE PERFORMED IN THE DRY. REFER TO SPECIFICATION SECTION 02 40 00 "CONTROL OF WATER" FOR DETAILS AND REQUIREMENTS.

E1 SITE PLAN
SCALE: 1" = 10'



A1 LEDGE SPINE PROFILE
SCALE: 1" = 2'



US Army Corps of Engineers

DESIGNED BY: K. WIELLER	ISSUE DATE:
CHECKED BY: K. WIELLER	SOLICITATION NO.:
SUBMITTED BY: L. THIBODEAU LPT	CONTRACT NO.:
SCALE: N.T.S.	DRAWING CODE: TMR-4
	SHEET 4 OF 6

FISH ACCESS TO THE
FISH PASSAGE FACILITY
HUNTS MILL DAM, TEN MILE RIVER

SITE PLAN AND PROFILE

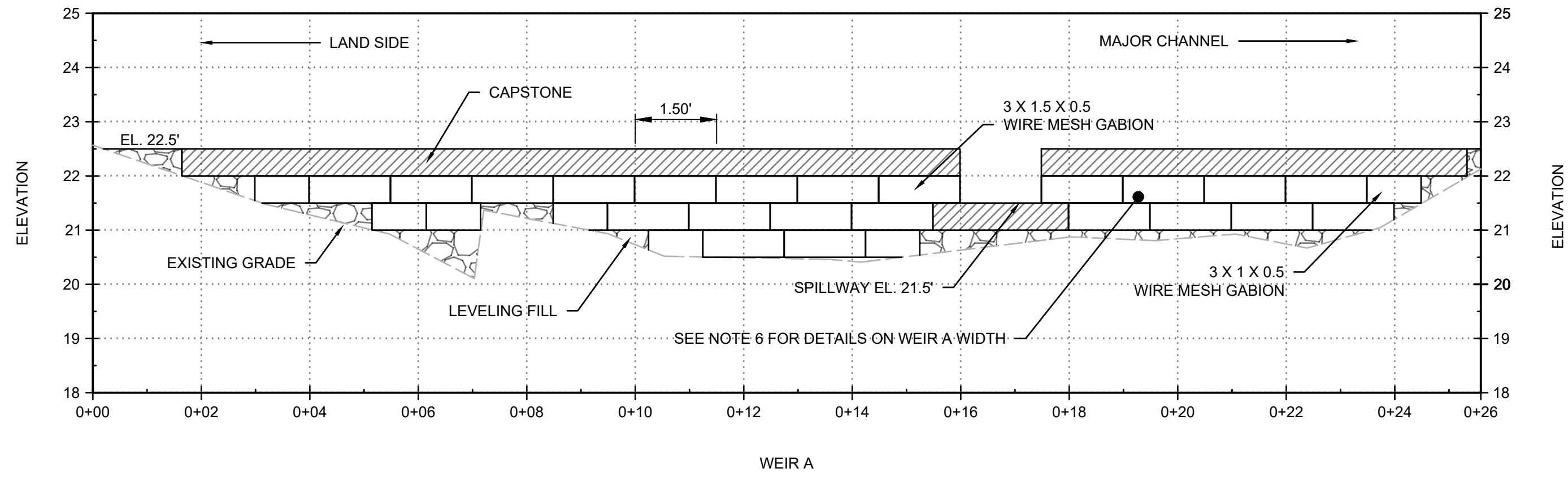
SHEET ID
C-102

MARK	DESCRIPTION	DATE

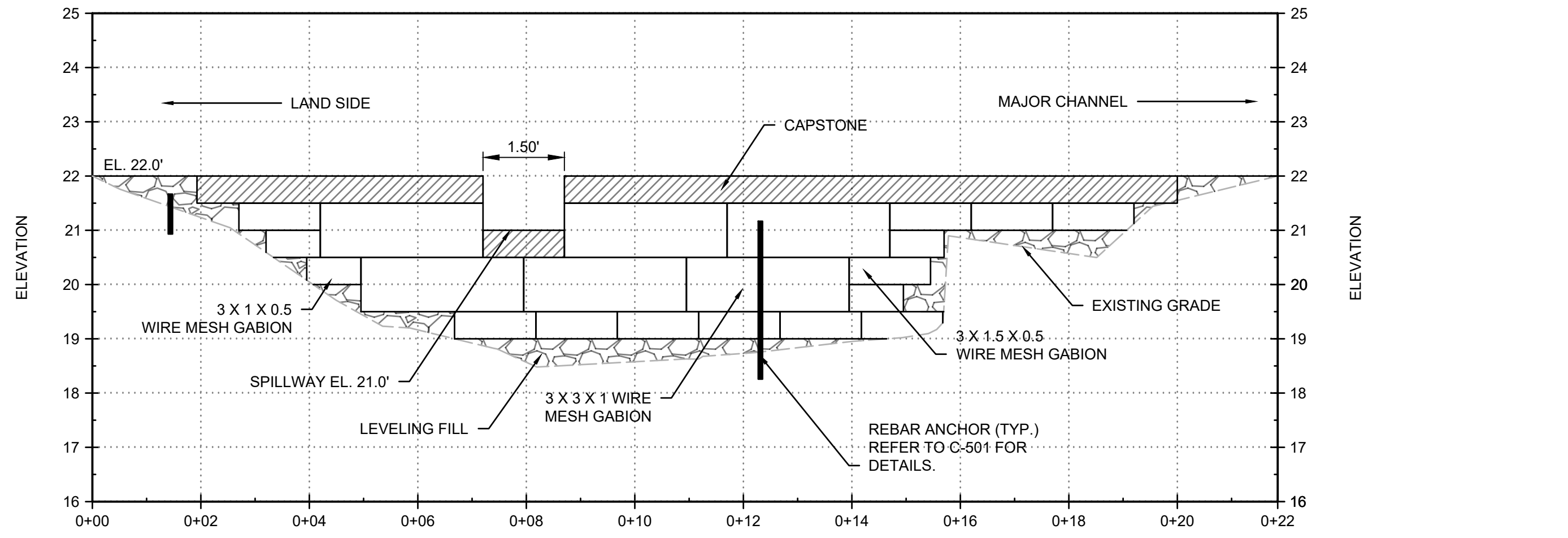
DESIGNED BY: K. WUELLER NEW ENGLAND DISTRICT 686 VIRGINIA ROAD CONCORD, MA 01742-2751	ISSUE DATE:	SUBMITTED BY: L. THIBODEAU LPT TWR-4
	SOLICITATION NO.:	DRAWING CODE: TWR-4
	CONTRACT NO.:	SCALE: 1/2" = 1'
U.S. ARMY CORPS OF ENGINEERS NEW ENGLAND DISTRICT 686 VIRGINIA ROAD CONCORD, MA 01742-2751	CHECKED BY: S. BUICEK	SHEET 5 OF 6
	DATE:	

FISH ACCESS TO THE
FISH PASSAGE FACILITY
HUNTS MILL DAM, TEN MILE RIVER
EAST PROVIDENCE, RHODE ISLAND

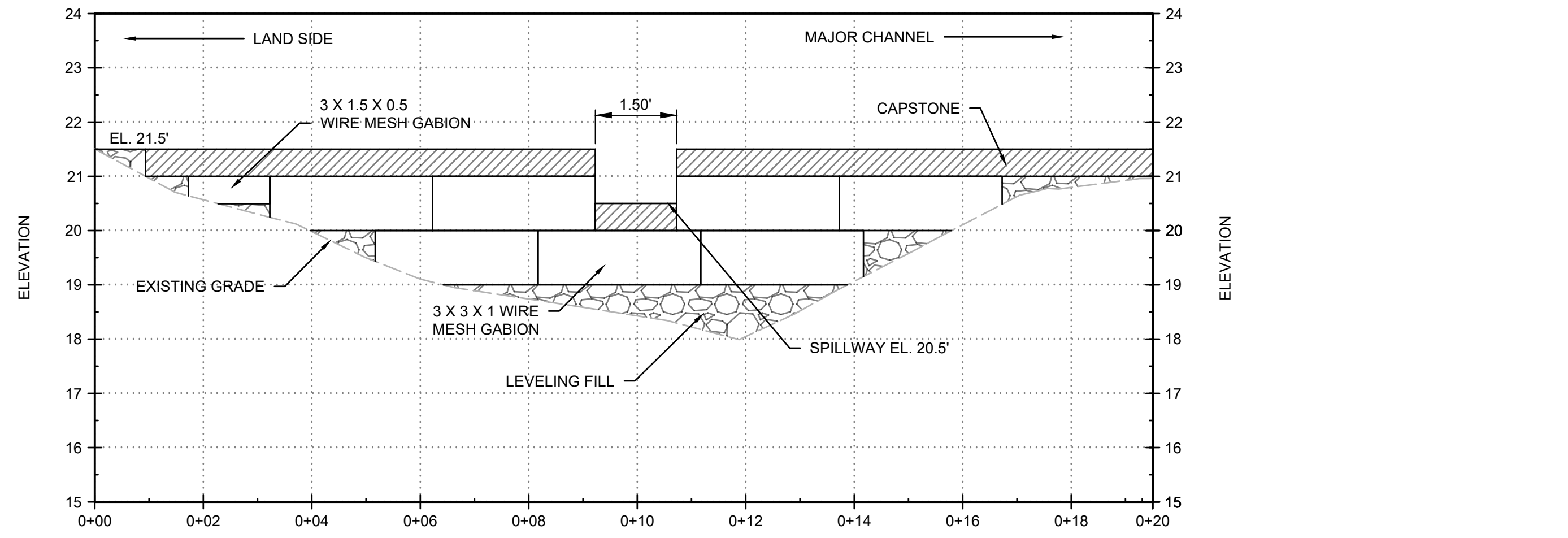
WEIR SECTIONS



WEIR A



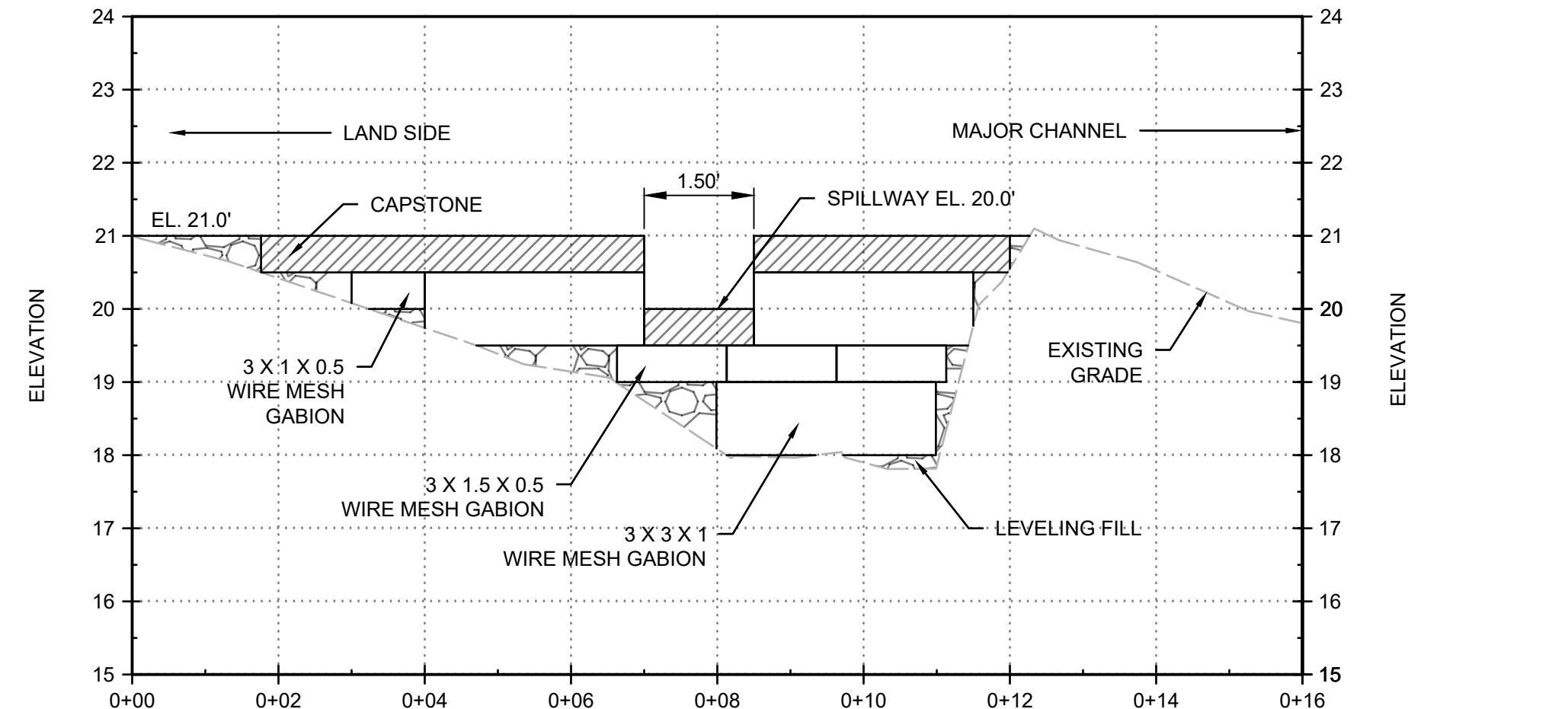
WEIR B



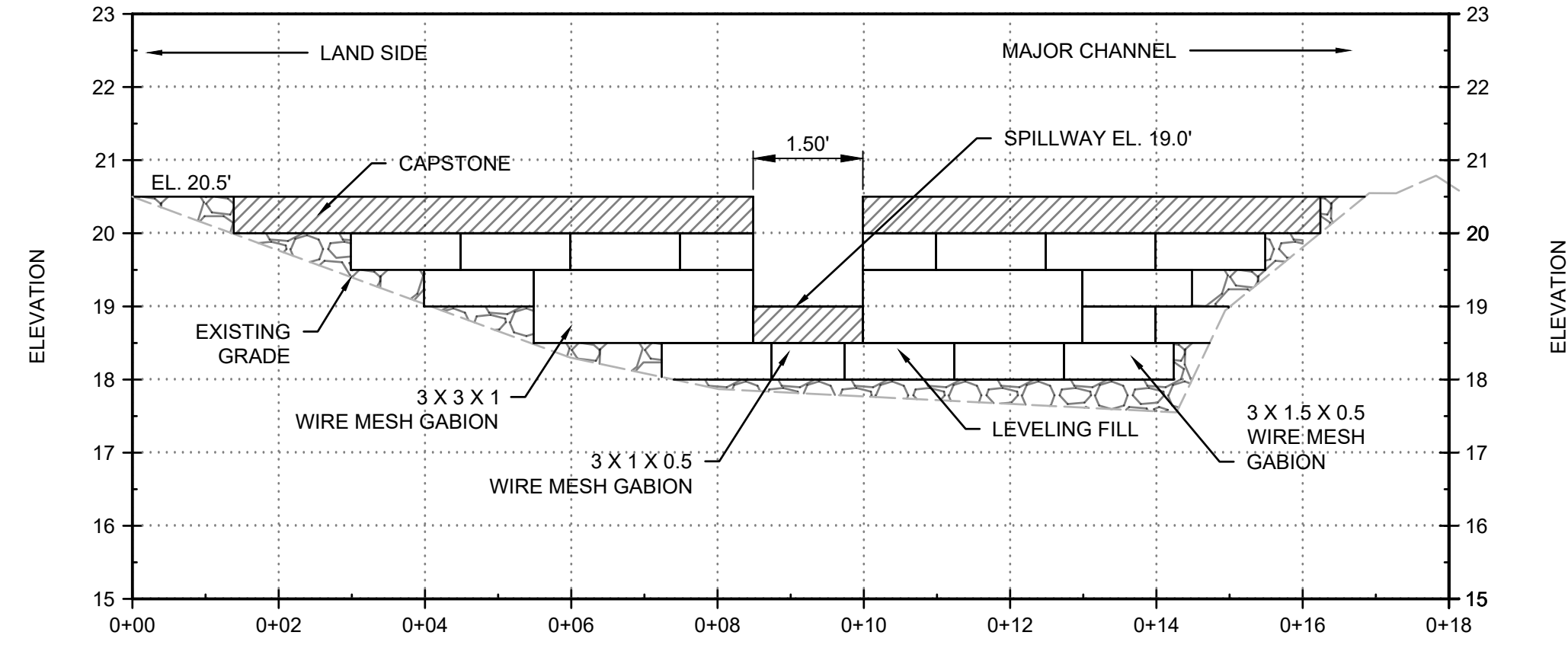
WEIR C

CONSTRUCTION NOTES

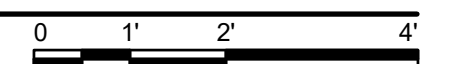
- SECTION VIEWS SHOWN REPRESENT VIEW LOOKING IN THE UPSTREAM DIRECTION.
- GABION DIMENSIONS SHOWN INDICATE W x L x H IN FEET. WHERE WIDTH REFERS TO THE UPSTREAM/DOWNSTREAM DIRECTION AND LENGTH REFERS TO THE DIRECTION ACROSS THE CHANNEL.
- CONTRACTOR SHALL CONSTRUCT WEIRS USING WIRE MESH GABIIONS. CONTRACTOR SHALL ENSURE CONTACT WITH BOTTOM SURFACE IS ESTABLISHED, AND MAY USE LEVELING FILL AS REQUIRED. FIELD ADJUSTMENTS MAY BE NECESSARY.
- CONSTRUCTED WEIR FOOTPRINT AND BASKET LAYOUT MAY VARY FROM DESIGN BASED ON ON-SITE CONDITIONS, WHERE ADJUSTMENTS TO LAYOUT MAY BETTER FIT TO EXISTING ROCK AND COMPLEX TERRAIN.
- CONTRACTOR TO FASTEN ALL GABIIONS TOGETHER SO THAT WEIR ACTS AS ONE STRUCTURE. INTENT OF THIS MEASURE IS TO ENSURE INDIVIDUALS GABIIONS ARE NOT ABLE TO DISLodge AND WASH OUT DOWNSTREAM.
- CONTRACTOR SHALL INCLUDE FLOWABLE FILL IN THE FILLING OF THE GABION BASKETS TO REDUCE THE PERMEABILITY OF THE WEIRS. REFER TO SPECIFICATION SECTION 31 00 00 FOR ADDITIONAL INFORMATION ON FLOWABLE FILL AND SECTION 31 36 00 WIRE MESH GABIIONS PARAGRAPH "INSTALLATION AND FILLING"
- WEIR A WIDTH IS 6', WHILE ALL OTHER WEIRS ARE 3' IN WIDTH. 6' WIDTH MAY BE CREATED USING TWO PARALLEL ROWS OF GABION BASKETS SECURED TOGETHER.



WEIR D



WEIR E





US Army Corps of Engineers

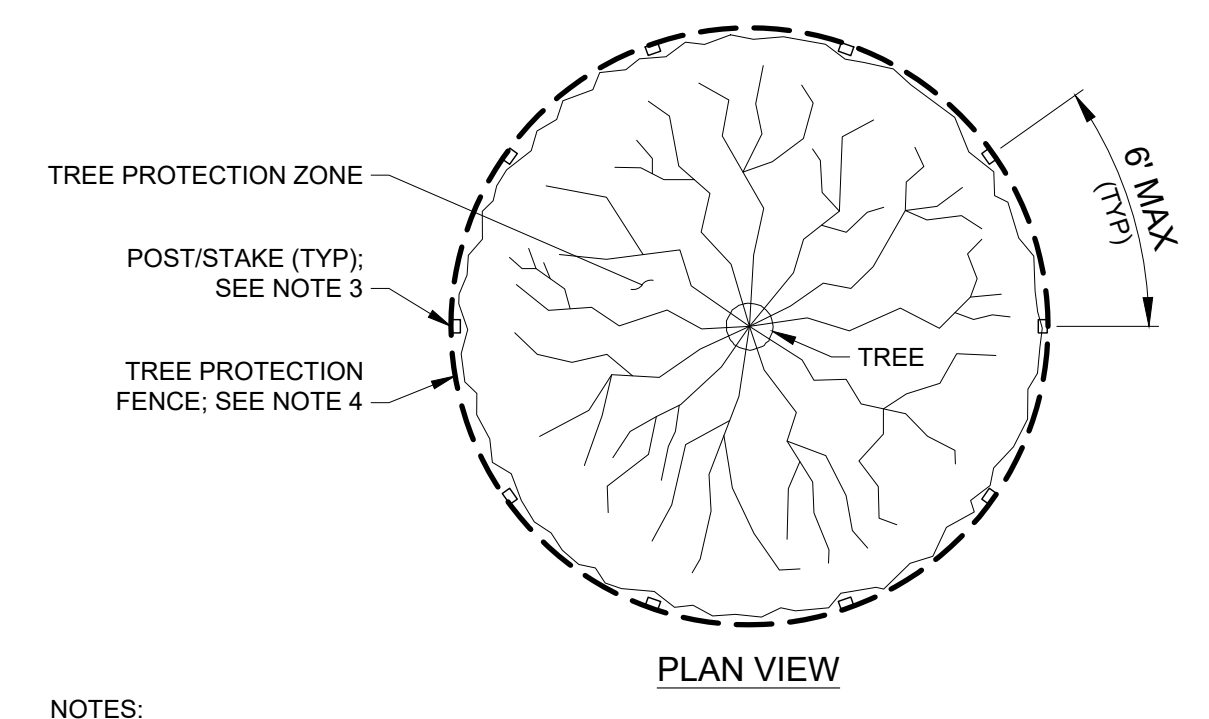
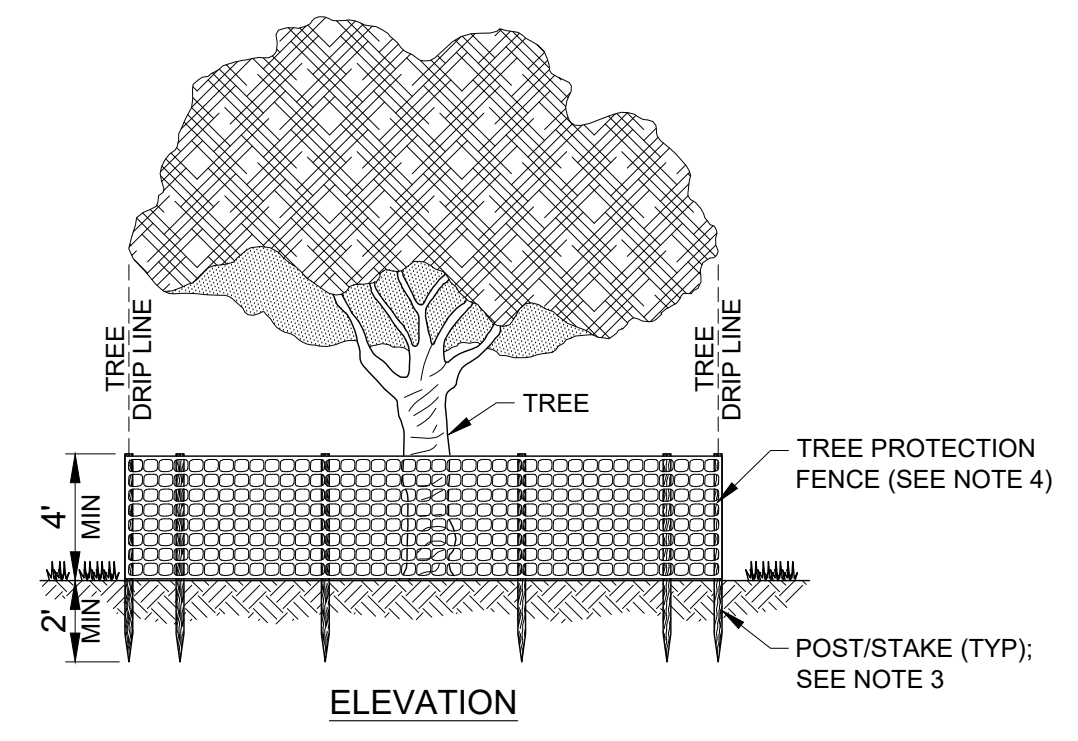
MARK	DESCRIPTION	DATE

DESIGNED BY: K. WUELLER	ISSUE DATE:
CHECKED BY: K. WUELLER	SOLICITATION NO.:
SUBMITTED BY: S. BUCEK	CONTRACT NO.:
SIZE: ANSI D	DRAWING CODE: TWR-4
SCALE: N.T.S.	SHEET 6 OF 6

FISH ACCESS TO THE
FISH PASSAGE FACILITY
HUNTS MILL DAM, TEN MILE RIVER
EAST PROVIDENCE, RHODE ISLAND

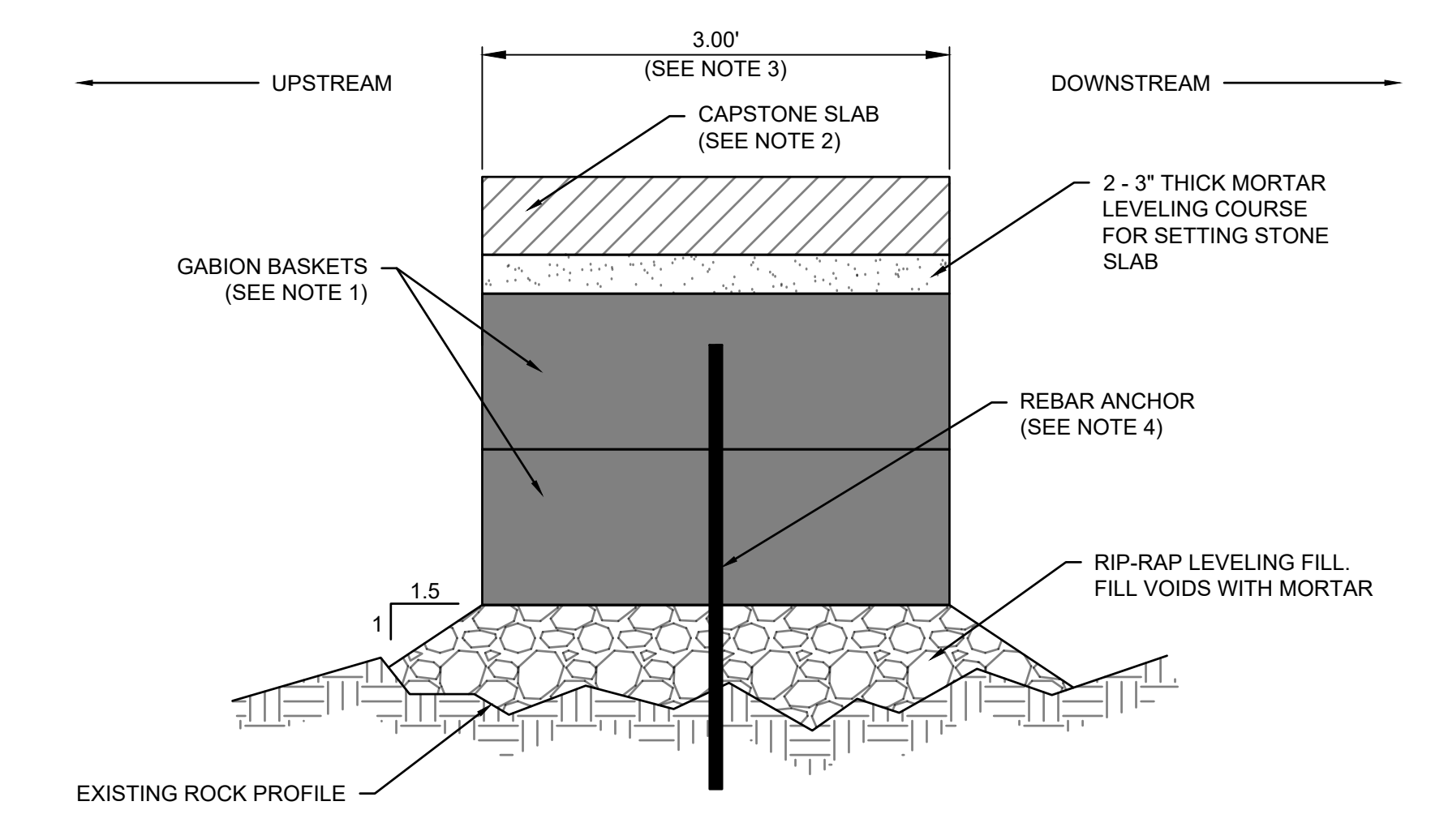
CONSTRUCTION DETAILS

SHEET ID
C-501



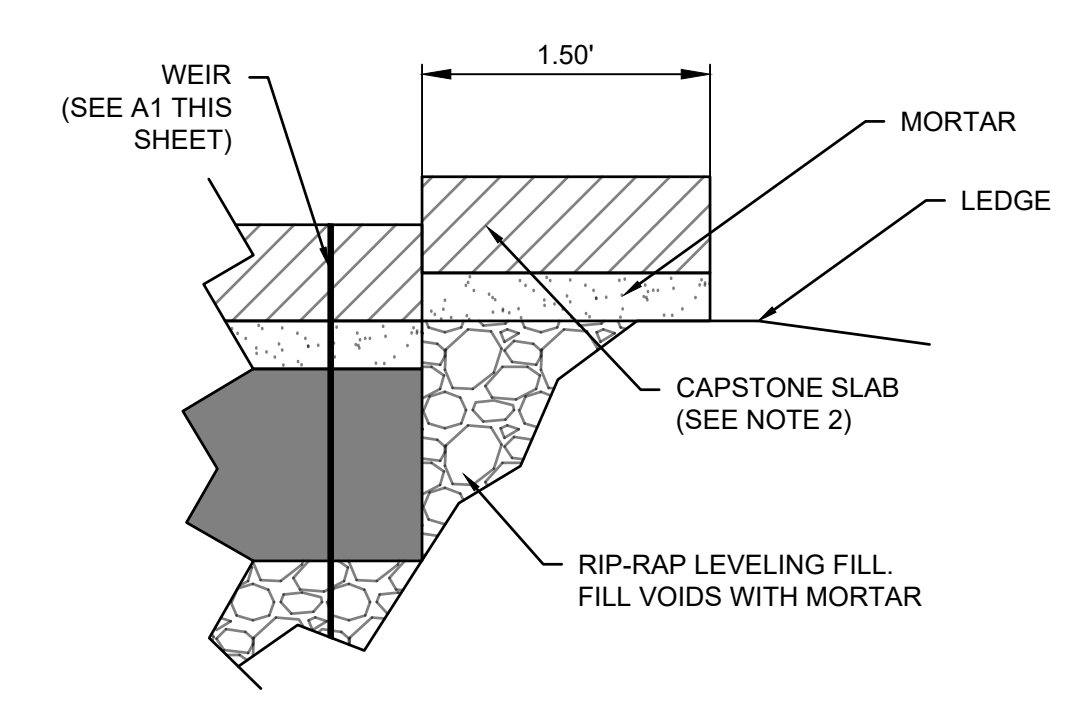
- NOTES:**
1. INSTALL TREE PROTECTION FENCE PRIOR TO THE START OF CONSTRUCTION. MULTIPLE TREES CLOSE TOGETHER WHERE DRIP LINES OVERLAP MAY BE WRAPPED BY ONE CONTINUOUS FENCE.
 2. FENCE MATERIAL SHALL BE AT LEAST 48" HIGH AND BE 100% RECYCLED UV RESISTANT HIGH DENSITY POLYETHYLENE MESH. COLOR SHALL BE HIGH VISIBLE ORANGE.
 3. UTILIZE STEEL T-POSTS OR LANDSCAPE HARDWOOD STAKES. LENGTH FOR POSTS AND STAKES USED SHALL BE AT LEAST 6 FEET OR MORE.
 4. ATTACH FENCE MATERIAL TO POSTS/STAKES USING STANDARD CABLE ZIP TIES. TIES SHALL BE UV RESISTANT FLEXIBLE NYLON. A SUBSTITUTE TIE MAY BE USED IF APPROVED BY THE CONTRACTING OFFICER.

G1 TREE PROTECTION DETAIL
SCALE: NONE



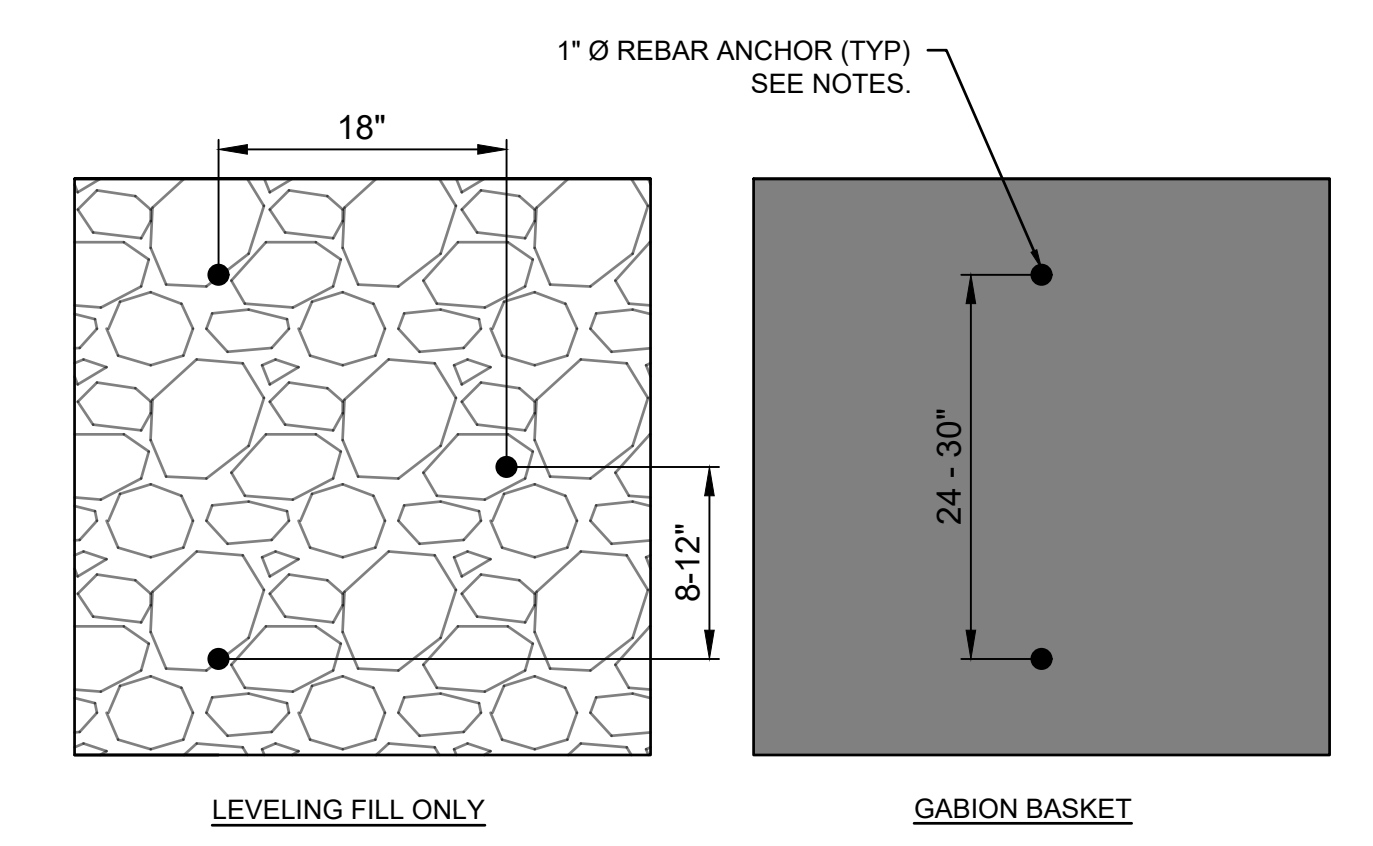
- NOTES:**
1. STACK GABION BASKETS AS NECESSARY TO CONSTRUCT WEIRS TO FINAL ELEVATIONS SHOWN ON C-101. FILLING OF GABION BASKETS SHALL INCLUDE PLACEMENT OF FLOWABLE FILL. REFER TO SPECIFICATION SECTION 31 36 00 WIRE MESH GABIONS PARAGRAPH "INSTALLATION AND FILLING".
 2. CAPSTONE SHALL MEET THE REQUIREMENTS OUTLINED IN SPEC SECTION 35 31 19. CAPSTONE JOINTS TO BE LOCATED AT THE CENTER OF THE SUPPORTING GABION BASKET.
 3. WEIRS ARE 3' IN WIDTH WITH EXCEPTION OF WEIR A, WHICH IS 6' IN WIDTH.
 4. REBAR ANCHORS. DOWEL TO ANCHOR MIN 8" INTO EXISTING ROCK. TOP OF DOWEL TO TERMINATE A MIN. 4" BELOW TOP OF GABION BASKET OR TOP OF LEVELING FILL. REFER TO DETAIL A13 THIS SHEET FOR SPACING REQUIREMENTS.

A1 GABION WEIR SECTION DETAIL
SCALE: NONE



- NOTES:**
1. MINIMUM ELEVATION OF TOP OF LEDGE SPINE MUST MATCH ELEVATION OF THE TOP OF WEIR DIRECTLY DOWNSTREAM.
 2. CAPSTONE SHALL MEET THE REQUIREMENTS OUTLINED IN SPEC SECTION 35 31 19.

A8 LEDGE SPINE SECTION DETAIL
SCALE: NONE



- NOTES:**
1. DOWELS TO BE INSTALLED EVERY 24-30" ALONG WEIR WALL WHERE GABION BASKETS ARE PRESENT, AND EVERY 8-12" WHERE ONLY LEVELING FILL IS PRESENT. EACH GABION BASKET SHALL RECEIVE A MIN. 1 REBAR ANCHOR.
 2. REBAR ANCHORS TO BE INSTALLED IN 1.25" HOLES, FILLED WITH GROUT PER SPECIFICATION SECTION 03 01 32.

A13 REBAR ANCHOR PLACEMENT
SCALE: NONE